



Long-lasting, reliable solution

HID-HighPower for SON/MH/HPL/HPI

Encapsulated ballasts for use with SON (T) (Plus), HPL, HPI and MH lamps with rated wattages of 1000 W and above

Benefits

- Protected from overheating – outstanding product lifetime of 15 years average
- Minimal watt losses thanks to orthocyclic winding process
- Ideal for pole mounting

Features

- Excellent resistance to chemical impact, humid conditions and environmental stress crack
- Class I rated (i.e. with earthing facility)
- Equipped with screw terminal blocks as standard
- Separate earth terminal (HID 'Heavy Duty')
- Ballasts for alternative mains voltages/frequencies available upon request

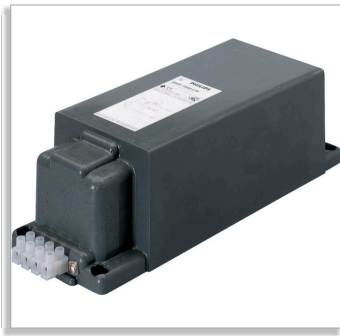
Application

- Outdoor lighting (most popular application areas: sports and area lighting)

System

- Electromagnetic system requires ballast, ignitor and capacitor
- Ballast power 1000 W and above – series or parallel circuit can be applied. Ignitor and capacitor value according to system power can be found in lamp-ballast combination sheet

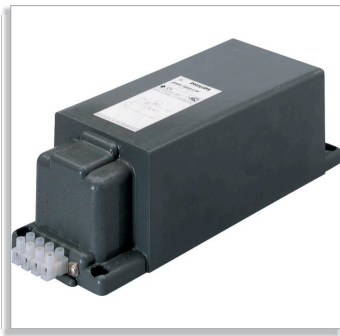
Related products



BHD HP-317



BHL HP-207/257/317

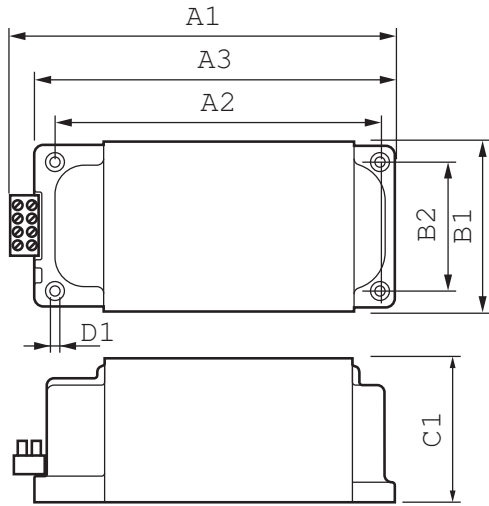


BMH HP-317



BSN 1000 HP-257

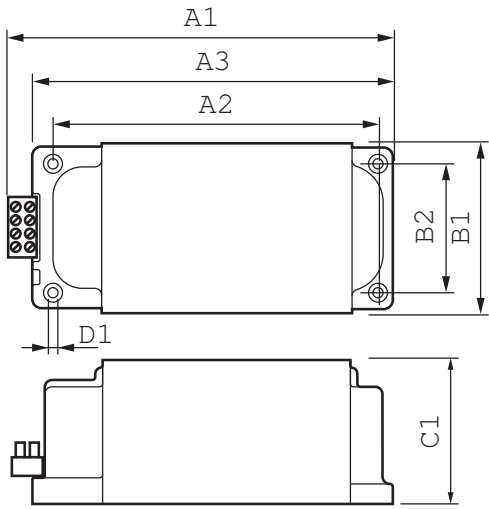
Dimensional drawing



HID-HighPower BHL 1000 L78 230/240V 50Hz HP-207

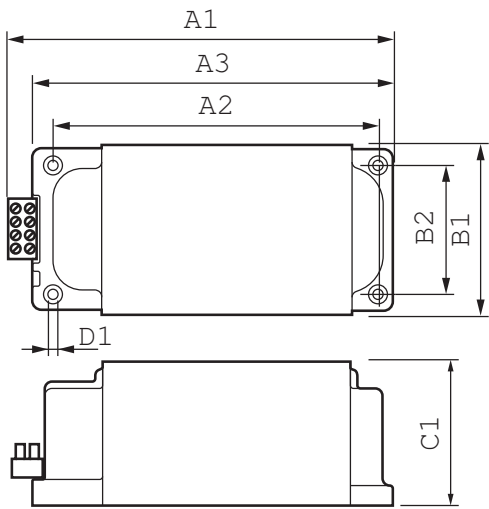
Product	A1 (Norm)	A2 (Norm)	A3 (Norm)	B1 (Norm)	B2 (Norm)	C1 (Norm)	D1 (Norm)
BHL 1000 L78 230/240V 50Hz HP-207	207.0	172.0	196.0	117.0	88.0	102.0	6.5
BHL 2000 L76 380/400/415V 50Hz HP-317	317.0	282.0	306.0	117.0	88.0	102.0	6.5
BHL 2000 L78 230/240V 50Hz HP-317	317.0	282.0	306.0	117.0	88.0	102.0	6.5
BHL 2000 L50 360/380/400V 50Hz HP-257	257.0	222.0	246.0	117.0	88.0	102.0	6.5
BHL 1000 L02 220V 50Hz HP-207	207.0	172.0	196.0	117.0	88.0	102.0	6.5

Dimensional drawing



HID-HighPower BSN 1000 L78 230/240V 50Hz HP-257

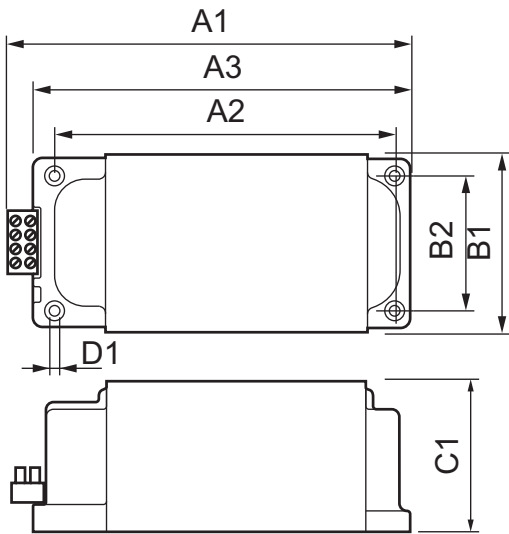
Product	A1 (Norm)	A2 (Norm)	A3 (Norm)	B1 (Norm)	B2 (Norm)	C1 (Norm)	D1 (Norm)
BSN 1000 L78 230/240V 50Hz HP-257	257.0	222.0	246.0	117.0	88.0	102.0	6.5
BSN 1000 L02 220V 50Hz HP-257	257.0	222.0	246.0	117.0	88.0	102.0	6.5



HID-HighPower BMH 1800 L78 230/240V 50Hz HP-317

Product	A1 (Norm)	A2 (Norm)	A3 (Norm)	B1 (Norm)	B2 (Norm)	C1 (Norm)	D1 (Norm)
BMH 1800 L78 230/240V 50Hz HP-317	317.0	282.0	306.0	117.0	88.0	102.0	6.5
BMH 2000 L76 380/400/415V 50Hz HP-317	317.0	282.0	306.0	117.0	88.0	102.0	6.5

Dimensional drawing



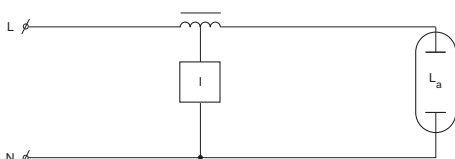
HID-HighPower BHD 2000 L76 380/400/415V 50Hz HP-317

Product	A1 (Norm)	A2 (Norm)	A3 (Norm)	B1 (Norm)	B2 (Norm)	C1 (Norm)	D1 (Norm)
BHD 2000 L76 380/400/415V 50Hz HP-317	317.0	282.0	306.0	117.0	88.0	102.0	6.5
BHD 2000 L77 400/415/430V 50Hz HP-317	317.0	282.0	306.0	117.0	88.0	102.0	6.5

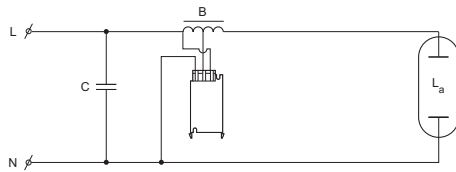
General Characteristics

Order code	Full product name	Applica-tion code	Rated Lamptype	Rated Number of Lamps	Rated Ballast-Lamp Power	Line Voltage	Line Voltage Multi-tab	Line Frequency
913700232103	BHD 2000 L76 380/400/415V 50Hz HP-317	L76	MH	1 piece	2000	380-415 V	380/400/415	50 Hz
913700248703	BHD 2000 L77 400/415/430V 50Hz HP-317	L77	MH	1 piece	2000	400-430 V	400/415/430	50 Hz
913700217303	BHL 1000 L78 230/240V 50Hz HP-207	L78	HPI	1 piece	1000	230/240 V	230/240	50 Hz
913700217903	BHL 2000 L76 380/400/415V 50Hz HP-317	L76	HPI	1 piece	2000	380-415 V	380/400/415	50 Hz
913700218003	BHL 2000 L78 230/240V 50Hz HP-317	L78	HPI	1 piece	2000	230/240 V	230/240	50 Hz
913700218303	BHL 2000 L50 360/380/400V 50Hz HP-257	L50	HPI	1 piece	2000	380/400 V	360/380/400	50 Hz
913700218403	BHL 1000 L02 220V 50Hz HP-207	L02	HPI	1 piece	1000	220 V	220	50 Hz
913700217703	BMH 1800 L78 230/240V 50Hz HP-317	L78	MHN-SA	1 piece	1800	230/240 V	230/240	50 Hz
913700218203	BMH 2000 L76 380/400/415V 50Hz HP-317	L76	MHN-SA	1 piece	2000	380-415 V	380/400/415	50 Hz
913700217503	BSN 1000 L78 230/240V 50Hz HP-257	L78	SON	1 piece	1000	230/240 V	230/240	50 Hz
913700218103	BSN 1000 L02 220V 50Hz HP-257	L02	SON	1 piece	1000	220 V	220	50 Hz

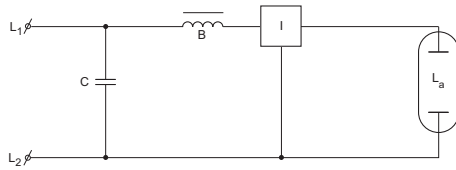
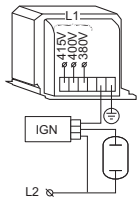
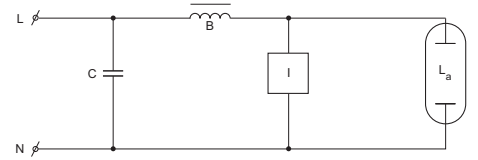
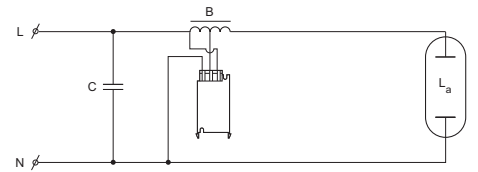
Wiring data



Wiring data



BSN-HP L02, L43, L78



© 2014 Koninklijke Philips N.V. (Royal Philips)
All rights reserved.

Specifications are subject to change without notice. Trademarks are the property of Koninklijke Philips N.V. (Royal Philips) or their respective owners.

www.philips.com/lighting

2014, February 21
data subject to change