

CERTIFICATE

Issued to:
Applicant:
Philips Lighting B.V.
High Tech Campus 45
5656 AE Eindhoven
The Netherlands

Manufacturer/Licensee:
Philips Lighting B.V.
High Tech Campus 45
5656 AE Eindhoven
The Netherlands

Product : LED Driver
Trade name : PHILIPS
Types : CertaDrive 30W 330mA 82V 230V
CertaDrive 30W 350mA 82V 230V

The product and any acceptable variation thereto is specified in the Annex to this certificate and the documents therein referred to.

DEKRA hereby declares that the above-mentioned product has been certified on the basis of:

- a type test according to the standard EN 61347-1:2008 + A1:2011 + A2:2013; EN 61347-2-13:2014; EN 62384:2006 + A1:2009
- an inspection of the production location according to CENELEC Operational Document CIG 021
- a certification agreement with the number 947556

DEKRA hereby grants the right to use the ENEC KEMA-KEUR certification mark.

The ENEC KEMA-KEUR certification mark may be applied to the product as specified in this certificate for the duration of the ENEC KEMA-KEUR certification agreement and under the conditions of the ENEC KEMA-KEUR certification agreement.

This certificate is issued on: 7 June 2016 and expires upon withdrawal of one of the above mentioned standards.

Certificate number: 2194355.01

DEKRA Certification B.V.



drs. G.J. Zoetbrood
Managing Director



Wim Singewald
Certification Manager

© Integral publication of this certificate is allowed

ACCREDITED BY THE
DUTCH ACCREDITATION
COUNCIL



SPECIFICATION OF THE CERTIFIED PRODUCT**Product data**

product	: LED Driver
trade name	: PHILIPS
types	: CertaDrive 30W 330mA 82V 230V CertaDrive 30W 350mA 82V 230V
rated voltage	: 220-240 V
nature of supply	: ac/dc
rated frequency	: 50/60 Hz
max. case temperature (tc)	: 75 °C
ambient temperature range(ta)	: -20...+50 °C
temperature declared thermally	
protection	: 110 °C
power factor (pf)	: 0,9C
output power	: See product data per type
output current	: See product data per type
output voltage	: See product data per type
description	: Built-in

Additional information

constant current type with terminal block

suitable for emergency lighting luminaire acc. IEC 60598-2-22. excluding high risk task areas

Product data - type CertaDrive 30W 330mA 82V 230V

output power	: 28 W
output current	: 0,33 A
output voltage	: 60-85 Vdc; 330 Vdc max.

Product data - type CertaDrive 30W 350mA 82V 230V

output power	: 29 W
output current	: 0,35 A
output voltage	: 57-82 Vdc; 340 Vdc max.

TESTS**Test requirements**

EN 61347-1:2008 + A1:2011 + A2:2013

EN 61347-2-13:2014

EN 62384:2006 + A1:2009

Test result

The test results are laid down in DEKRA test file 2194355.00.

Remarks

For component list refers to annex 1 of test reports 2194355.50.

This certificate supersedes the original certificate 2191367.01 dated 2016-04-12, which is herewith declared invalid.

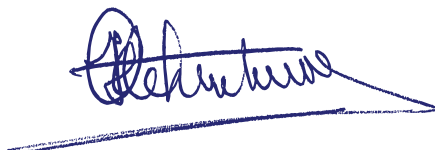
Conclusion

The examination proved that all test requirements were met.

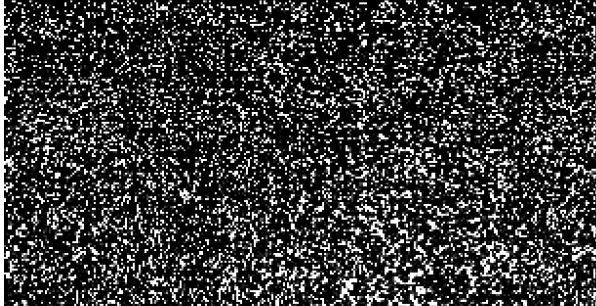
Tested by : J.H. Rikkers

A handwritten signature in blue ink, appearing to be "J.H. Rikkers", with a long horizontal stroke extending to the right.

Checked by : H.J.H. te Lindert

A handwritten signature in blue ink, appearing to be "H.J.H. te Lindert", with a long horizontal stroke extending to the right.

Factory locations



Philips Lighting Electronics Poland
ul Przemysłowa 29
64-920 Pila
Poland

