

Long-lasting, reliable solution

HID-Basic BHL MK4 for HPL/HPI

Impregnated electromagnetic copper/iron ballasts for HPL, HPI (Plus) and SON-H lamps

Benefits

- Long-lasting reliable solution protected from overheating; better for hot environments than its predecessors; extended warranty
- Minimal watt losses thanks to orthocyclic winding process
- Control gear can be installed remotely

Features

- Improved thermal features – much cooler ballast
- Ballasts designed for mercury lamps (HPL) without using an ignitor can also be used with HPI lamps with an ignitor
- Equipped with screw terminal blocks as standard; insert contacts available upon request
- Earthing-while-mounting facility
- Ballasts for alternative mains voltages/frequencies available upon request

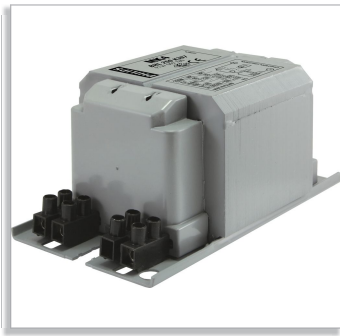
Application

- Outdoor lighting

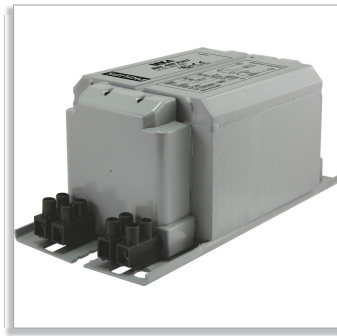
System

- Electromagnetic system requires ballast, ignitor and capacitor
- Mercury lamps (HPL) no ignitor needed. Capacitor value to match system power can be found on lamp/ballast combination sheet
- Metal-halide lamps (HPI) to be used with SI51 ignitor. Capacitor value to match system power can be found on lamp/ballast combination sheet.

Related products

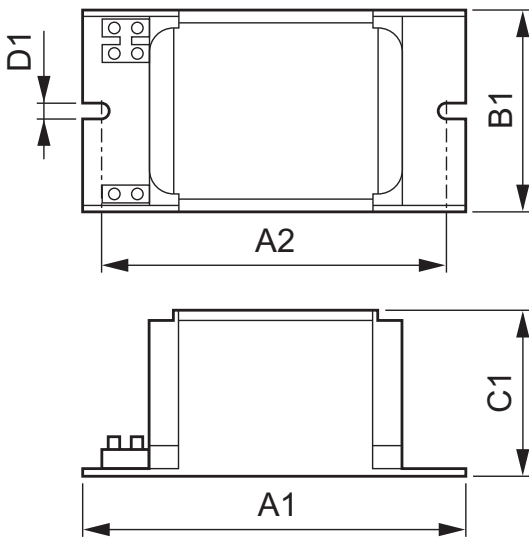


BHL BC1-118 & BC2-126/134



BHL 400 BC2-151/160

Dimensional drawing



BHL 250 K307 230/240V 50Hz BC2-134

Product	A1 (Norm)	A2 (Norm)	B1 (Norm)	C1 (Norm)	D1 (Norm)
BHL 250 K307 230/240V 50Hz BC2-134	134.0	113.0	76.0	65.0	6.2
BHL 400 K307 230/240V 50Hz BC2-160	160.0	139.0	76.0	65.0	6.2
BHL 80/125 K407 230/240V 50Hz BC1-118	118.0	94.0	61.0	52.0	6.2

General Characteristics

Order code	Full product name	Application code	Rated Lamp-type	Rated Number of Lamps	Rated Ballast-Lamp Power	Line Voltage	Line Frequency
887013 00	BHL 250 K307 230/240V 50Hz BC2-134	K307	HPL/HPI	1 piece	250	230/240 V	50 Hz
940138 00	BHL 80/125 K407 230/240V 50Hz BC1-118	K407	HPL/HPI	1 piece	80/125	230/240 V	50 Hz
887037 00	BHL 400 K307 230/240V 50Hz BC2-160	K307	HPL/HPI	1 piece	400	230/240 V	50 Hz

Wiring data





© 2015 Koninklijke Philips N.V. (Royal Philips)
All rights reserved.

Specifications are subject to change without notice. Trademarks are the property of Koninklijke Philips N.V. (Royal Philips) or their respective owners.

www.philips.com/lighting

2015, March 6
data subject to change