

# Long-lasting, reliable solution

HID-HeavyDuty BHL for HPL/HPI

Encapsulated electromagnetic copper/iron ballasts for HPL, HPI (Plus) and SON-H lamps

## Benefits

- Excellent resistance to chemical impact, humid conditions and environmental stress crack
- Long-lasting reliable solution – outstanding product lifetime of 15 years average
- Minimal watt losses thanks to orthocyclic winding process
- Control gear can be installed remotely

## Features

- Encapsulated with thermoplastic polyester resin, reinforced with glass fiber
- Ballasts designed for mercury lamps (HPL) without using an ignitor can also be used with HPI lamps together with an ignitor
- Equipped with screw terminal blocks as standard; insert contacts available upon request
- Ballasts for alternative mains voltages/frequencies available upon request
- Separate earth terminal (HID 'Heavy Duty')

## Application

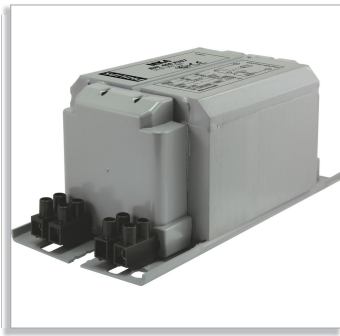
- Outdoor lighting

## System

- Electromagnetic system requires ballast, ignitor and capacitor
- Mercury lamps (HPL) ? no ignitor needed. Capacitor value to match system power can be found on lamp/ballast combination sheet
- Metal-halide lamps (HPI) to be used with SI51 ignitor. Capacitor value to match system power can be found on lamp/ballast combination sheet

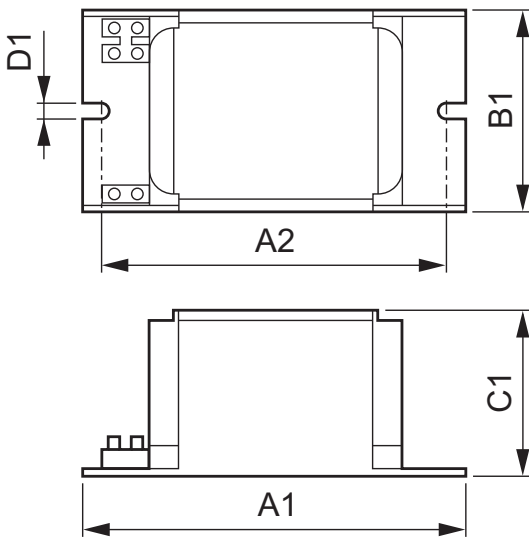
**PHILIPS**

Related products



BHL HD1-118 & HD2-126/134/151/160

Dimensional drawing



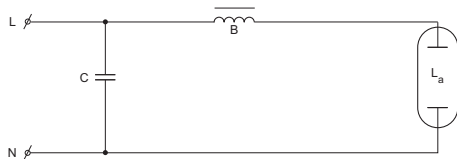
HID-HeavyDuty BHL 125 L40 230V 50Hz HD1-118

Product	A1 (Norm)	A2 (Norm)	B1 (Norm)	C1 (Norm)	D1 (Norm)
BHL 125 L40 230V 50Hz HD1-118	118.0	103.0	65.0	53.0	6.2
BHL 250 L40 230V 50Hz HD2-126	126.0	107.5	81.0	66.0	6.2
BHL 400 L40 230V 50Hz HD2-151	151.0	132.5	81.0	66.0	6.2

General Characteristics

Order code	Full product name	Application code	Rated Lamp-type	Rated Number of Lamps	Rated Ballast-Lamp Power	Line Voltage	Line Frequency
913602950426	BHL 125 L40 230V 50Hz HD1-118	L40	HPL	1 piece	125	230 V	50 Hz
913603920426	BHL 250 L40 230V 50Hz HD2-126	L40	HPL/HPI	1 piece	250	230 V	50 Hz
913604920426	BHL 400 L40 230V 50Hz HD2-151	L40	HPL/HPI	1 piece	400	230 V	50 Hz

Wiring data





© 2014 Koninklijke Philips N.V. (Royal Philips)  
All rights reserved.

Specifications are subject to change without notice. Trademarks are the property of Koninklijke Philips N.V. (Royal Philips) or their respective owners.

[www.philips.com/lighting](http://www.philips.com/lighting)

2014, February 21  
data subject to change