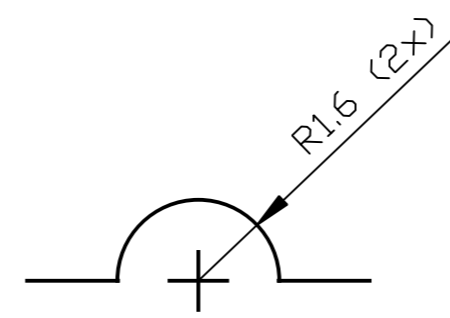
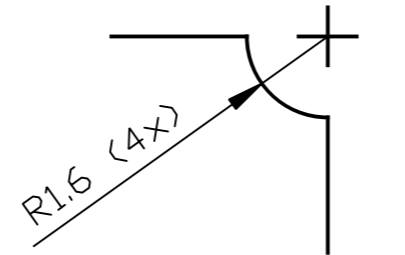
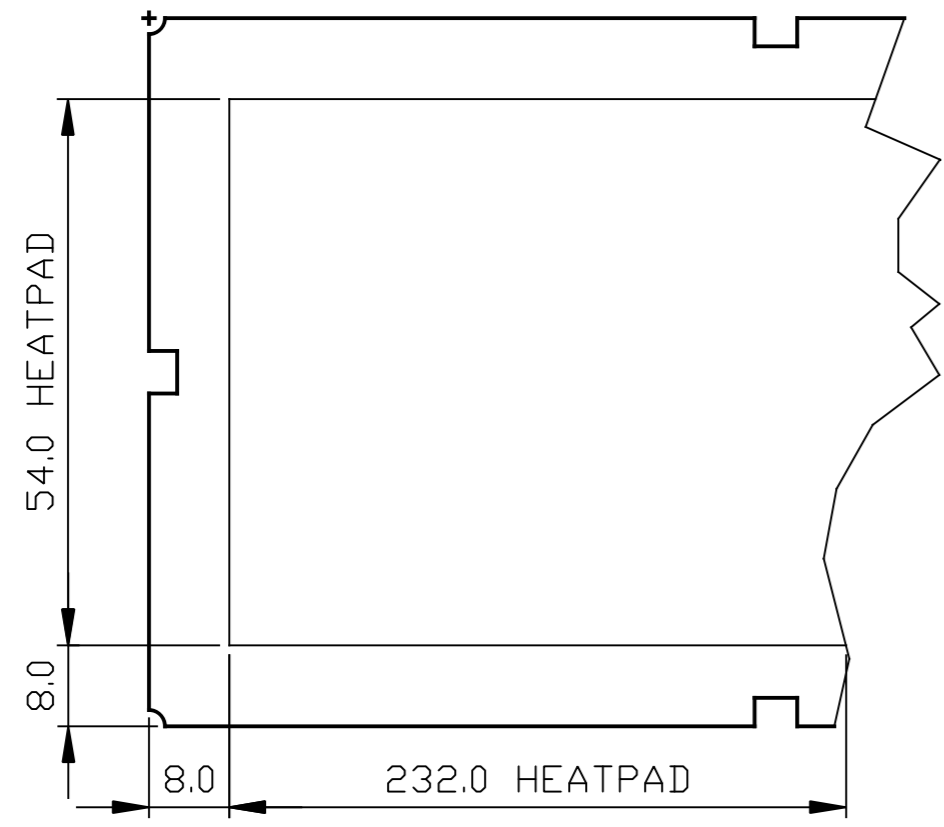
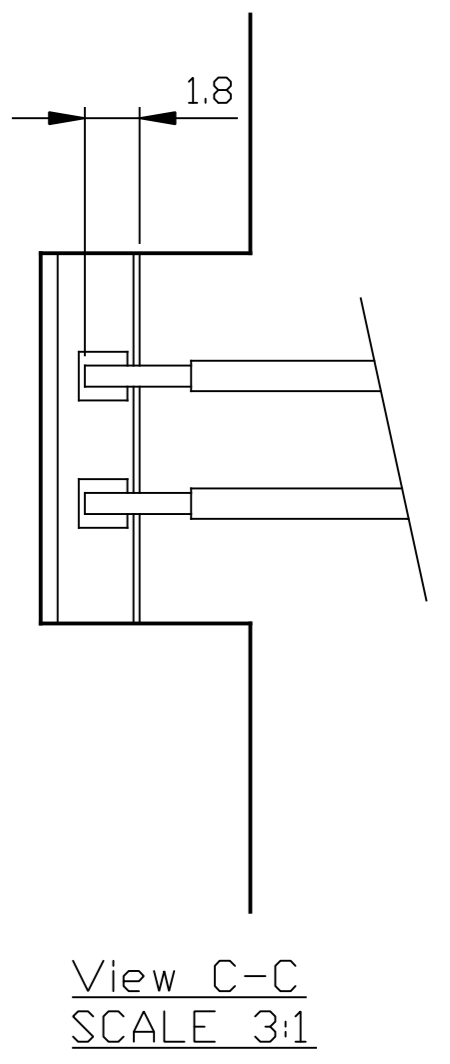
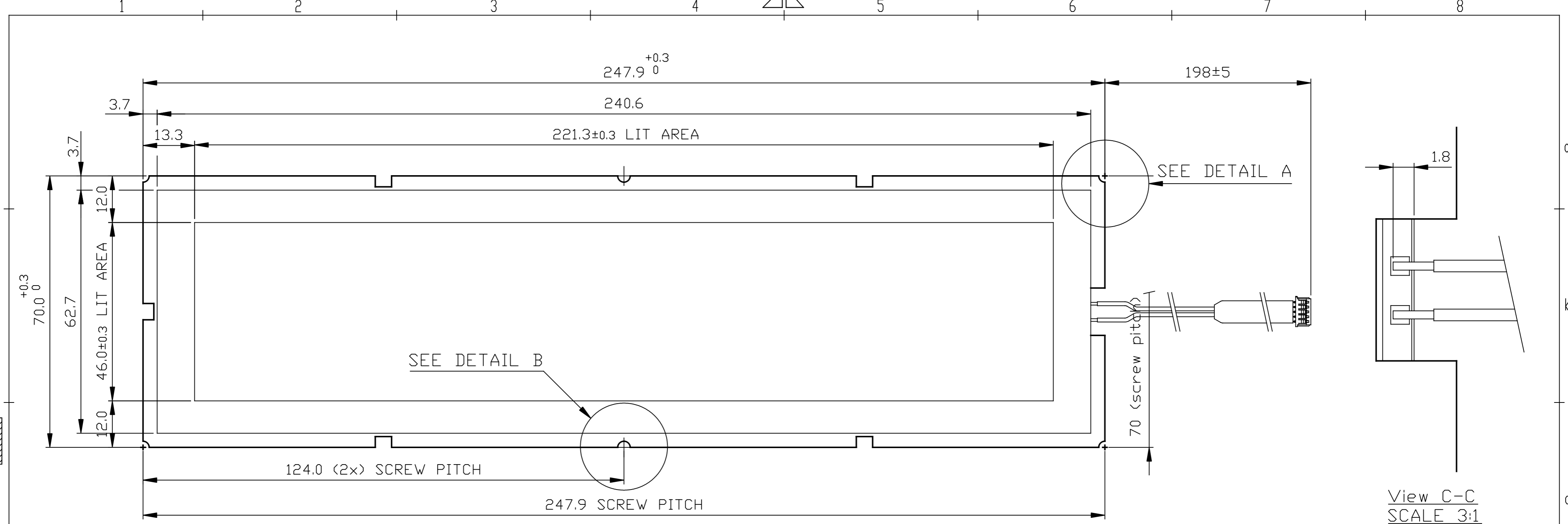


© All rights are reserved. Reproduction in whole or part is prohibited without the written consent of the copyright owner.



VOLUME: Error: No reference TOTAL AREA: Error: No reference GENERAL THICKNESS: mm DRAFT ANGLE: ° GENERAL RADIUS: mm FLATNESS: mm		- SHAPE DEFINED IN THE LINKED 3D MODEL - NO MODIFICATIONS WITHOUT DEVELOPMENT AGREEMENT - REF. MARKING FOR DIE CASTED AND PLASTIC PARTS: LAST 5 DIGIT OF 12NC, WITH LAST DIGIT SLIDING - MAXIMUM THICKNESS INCREASE IN MARKING AREA 0.5 MM - NO BURRS, NO SHRINK MARKS, NO JUNCTION LINES - PARTS MUST BE SAFE FOR HANDLING - *ROHS COMPLIANT, EU DIR 2011/65/EU*		ADDITIONAL INFO	
REVISION	SYM	REVISED BY	REVISION INFORMATION		
GENERAL ROUGHNESS Ra in µm		TOLERANCES UNLESS OTHERWISE STATED +/- 0.2 DIMENSION		ISD 1302 ISD 12805	
SCALE PROJ. EURDP.		MATERIAL TREATMENT		ISD 1101/5459 ITEM ASSEMBLY NO. QUANT.	
CLASS No.		OLED Panel Brite 2 FL300L "XX" A0 Level 2		TOLERANCES ACCORDING TO NDRM NORMAL CLASS, IF NOT NOTICED (X,X) : CONTROL DIMENSION ORDER NO. QUANT.	
NAME Th. Hoegen		SUPERS		SH 1 SH -1	
CHECK		DATE		PROPERTY OF: © Copyright OLEDWORKS LLC	
				"XX": "WW" = LPB2300R1WWL201 "NW" = LPB2300R1NWL201	
				A 2016.05.24 A3	