

PHILIPS

www.philips.com

Quick Installation Guide

Philips EasyAir SNS210 with Philips field app MC

innovation  you

“ This guide shows a few key concepts to work with EasyAir SNS210 MC using Philips field app MC.

”



1

Prepare smart luminaries

With Xi SR driver and EasyAir SNS210 MC

2

Install Components

The physical installation with wireless components

3

Install App

Download the Philips field app MC on your phone and register

4

Set

Use the app for grouping, controlling lights and on-site configuration work.

5

Report

Check the energy report



Philips Xitanium SR driver

- Standardized open SR interface (now D4i)
- Low voltage power supply for sensors
- 4% accurate power metering

Philips EasyAir SNS210

- Motion and daylight sensing
- Simple two-wire connection to Xitanium SR driver
- Wireless communication with other SNS210 devices
- Suited for offices, hospitals and schools

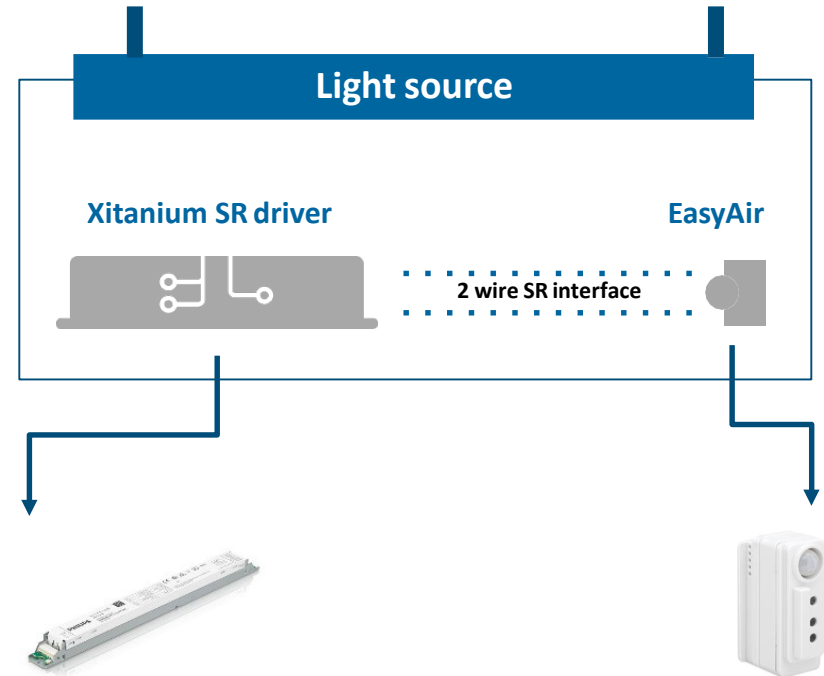
App

- Easy setup and configuration via Philips field app MC

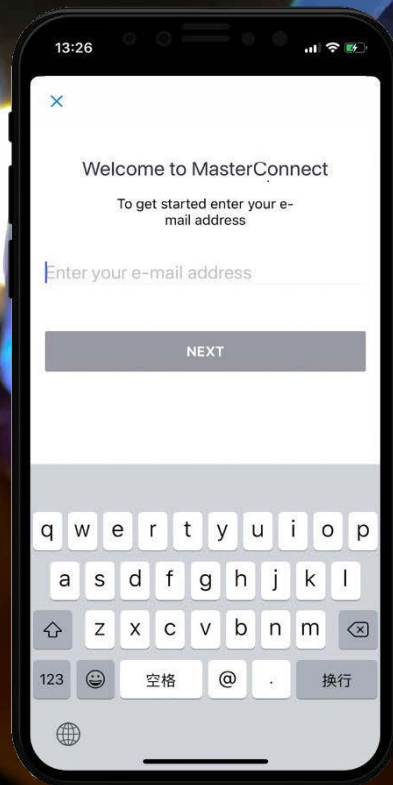
Wireless switch

- Work with Zigbee Green Power switches
- For manual control: switching and dimming
- Supported switches: Philips, Jaeger Direkt, Vimar, XTouch

Build wireless and smart luminaires



Get started with the app



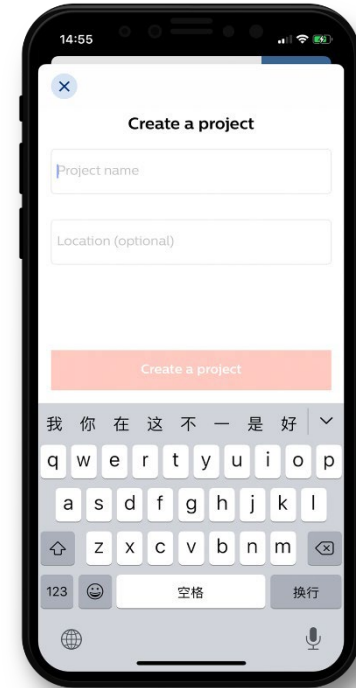
The Philips field app MC is the tool to setup and configure the system after installation.

- Works with Bluetooth
- Available for iPhones and Android smartphones

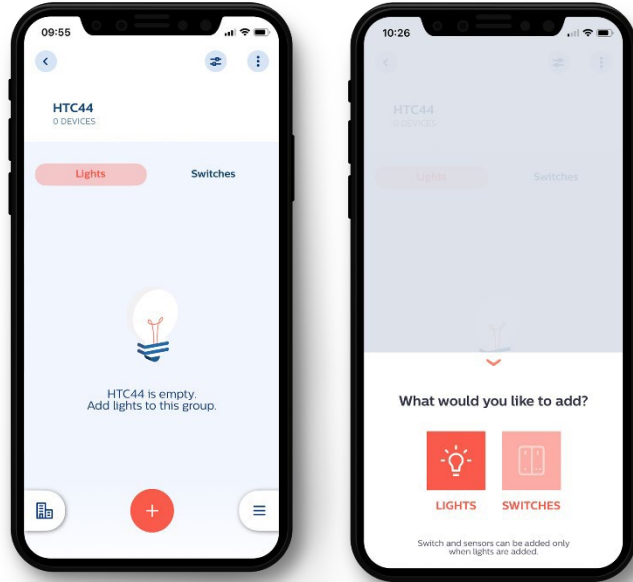


Create a project

1. Register via email.
2. Waiting for 6-digit verification code via email.
3. Log in to the Philips field app MC. Use the email address and verification code you just received from email.
4. Tap a project name and the location (optional), then tap Create a project to continue.
5. Start adding groups to commission the project.



Commissioning




1. Tap '+' button to create a group.
 2. Tap '+' button to add lights.
 3. Wait few seconds for the app to discover devices.
- There are two ways of adding devices:
 - Point and trigger: Use Torchlight to add devices
 - List based: Add devices based on BLE signal strength

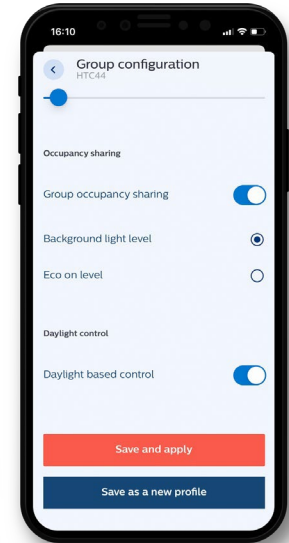
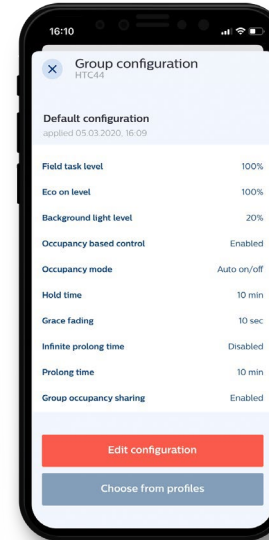
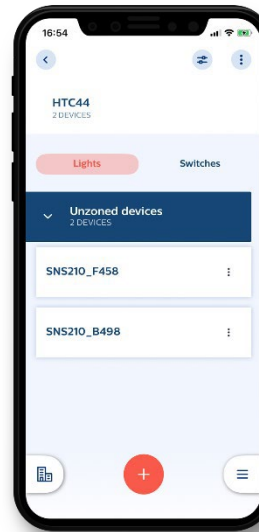
Configuration

Notes

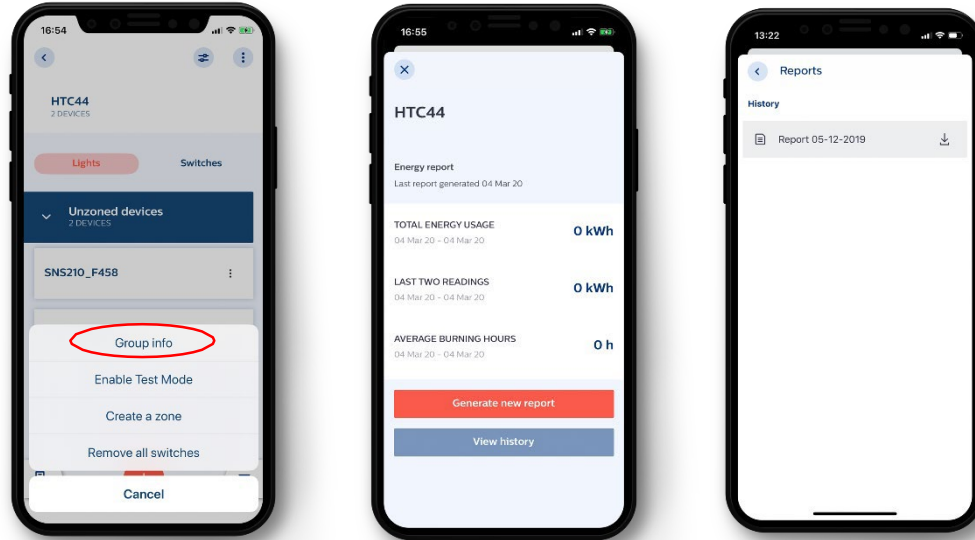
Light behavior can be programmed via Philips field app MC e.g. light levels, group light behavior, hold/prolong times, etc.

Steps

- After adding the lights, tap the  button
- Tap 'Edit configuration'
- Using the app to check or change the parameters.
- Tap 'Save and apply'



Device Data Readout



Check the energy report

Read energy usage of group via Philips field app MC

Steps

- Tap 'Group info'
- Tap 'Create new report'
- View history and download the report to view older readings

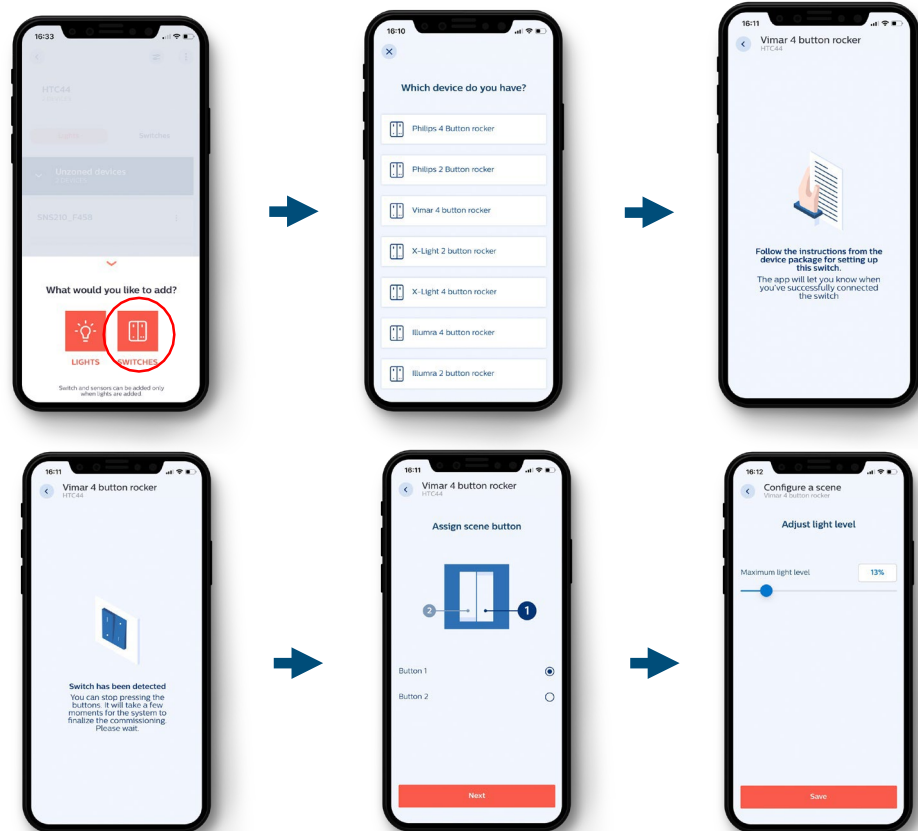


Add a switch

Add a switch to control the lights

Steps

- Tap '+' button to add a switch
- Choose the switch you have
- Follow the instructions to set up the switch
- Set scenes for more control





© 2021 Signify Holding. All rights reserved. The information provided herein is subject to change, without notice. Signify does not give any representation or warranty as to the accuracy or completeness of the information included herein and shall not be liable for any action in reliance thereon. The information presented in this document is not intended as any commercial offer and does not form part of any quotation or contract, unless otherwise agreed by Signify.

Philips and the Philips Shield Emblem are registered trademarks of Koninklijke Philips N.V. All other trademarks are owned by Signify Holding or their respective owners.

01/2021
Data subject to change

www.lighting.philips.co.uk/oem-emea/products/connected-lighting