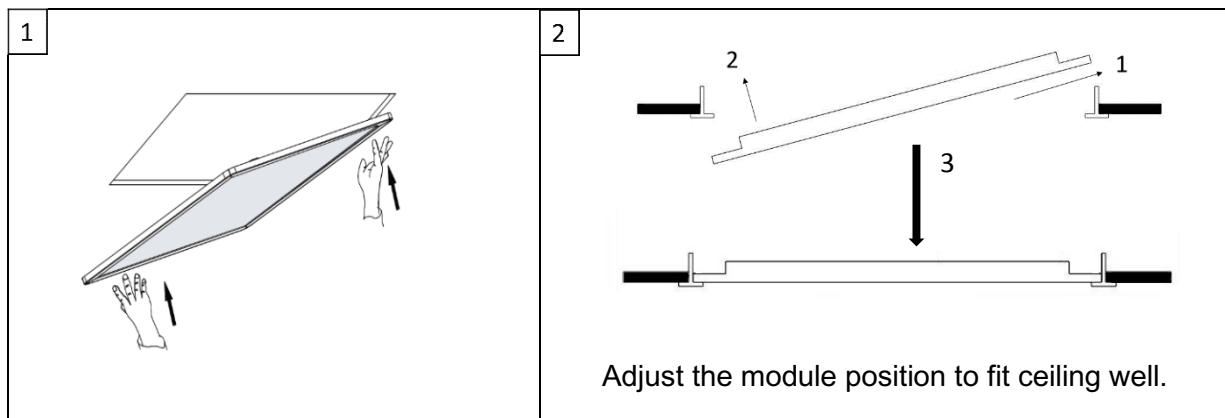
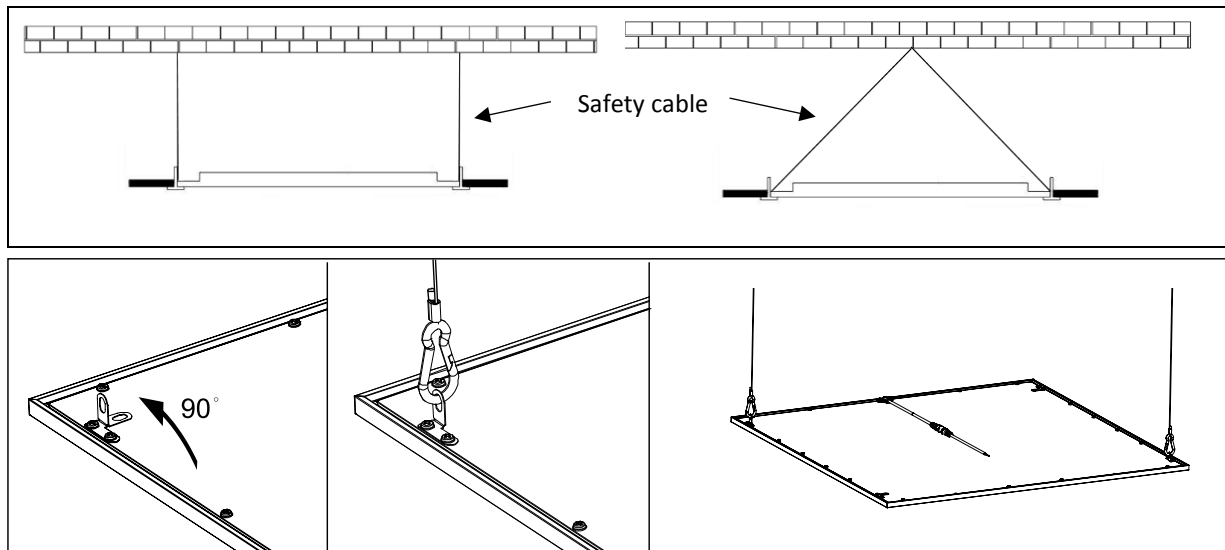


# Fortimo LED Panel light

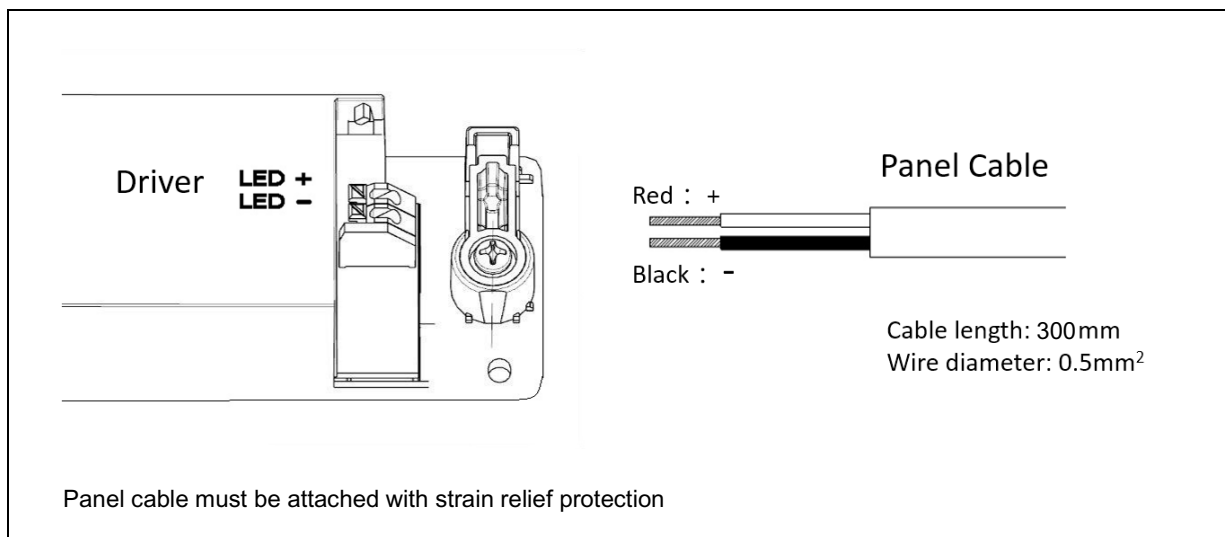
## Mounting of the panel in the ceiling



## Fixation of the optional safety cables



## Connection of the driver





## Warning

**Please read these instructions carefully before attempting to install this product.**

- This product is designed for installation on a T-bar ceiling system .
- Safety cable connection with the hook is recommended for safety purposes .
- Please follow this installation guide strictly.
- The module can only be installed into a ceiling that is perfectly horizontal and is safely suspended to a carrying structure.
- The module shall only be installed or replaced by a qualified electrician and connected in accordance with latest electrical regulations or national requirements.
- If the external flexible cord of this module is damaged, it shall be exclusively replaced by the manufacturer or his service agent or a similar qualified person .
- The supply cord and cable provided with the module is intended is for indoor use only.
- This module is intended for indoor use only.
- The light source of this luminaire is not replaceable; when the light source reaches its end of life the whole luminaire shall be replaced .
- The LED driver connected between mains and this panel shall be SELV output driver.
- The luminaire is not suitable for covering with thermally insulating material.

