

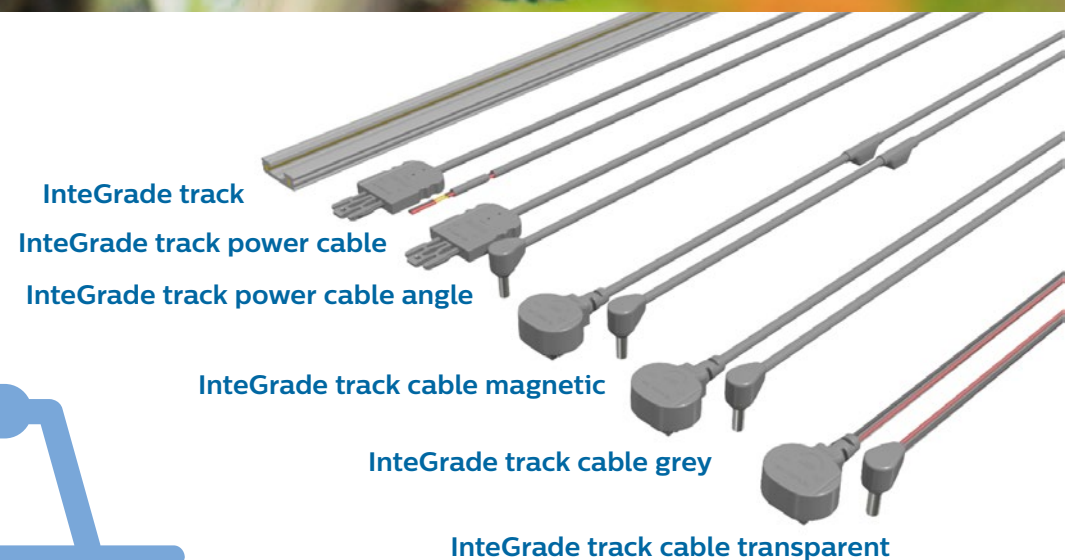


PHILIPS

RDL track system

The plug and play RDL track

Retail shelf lighting
has never been easier



Make light work of retail shelf lighting

Every retailer wants shelf lighting that's easy to install, is flexible for store layout changes and has an elegant and neat look and feel. The reason is simple; it enables them to focus attention on the merchandise to create the ultimate shopping and brand experience. And when collections and offers change in the store, flexible lighting makes it easy to adjust shelf heights, numbers and positions to create a fresh store layout without having to completely rewire the whole system.

Plug and play RDL track

Now there's a solution that so quick and easy to install, anyone can do it. Philips RDL track is a plug and play power track for low-voltage Philips Retail Display Lighting system. The unique "twist locks" click into place anywhere along the power track, so you

can connect multiple shelf lights with just one neat power track and one power cable to the driver. It's very easy to reposition if you need to refresh your store layout. A beautifully simple solution with a high-end look and feel.

Quick and easy installation

RDL track reduces the installation time because it's so quick and easy to fit. In current systems, each individual shelf light has its own power cable to the driver, resulting in multiple power cables. This creates a challenge in terms of quick and easy installation, reconfiguring or rearranging your shelving, and integrating the system seamlessly into the store layout. It also has the potential to create cable clutter that can detract from your displays and shows your retail brand in a poor light.

With the Philips RDL track system, just one power cable connects the power track to the driver. Each individual shelf light can be connected to the driver with a track cable anywhere along the track, enabling quick and easy installation. And thanks to the 3M double-sided foam tape, the power track can adhere to a wide range of substrates including metals, glass, many plastics and powder-coated paint.

Unique twist lock system

Thanks to our unique twist lock, connection is quick and simple, yet extremely secure. A corresponding groove on the right-hand side of the track, power cable and twist lock connector indicate correct fit for a robust connection with the right polarity.

Flexibility for store layout changes

The RDL track system consists of just three components: power track, power cable and track cables with twist lock connectors. Adding a driver and lights gives you a complete lighting system. The track is available in three lengths and can be cut to size, which offers greater flexibility for retailers to

accommodate a range of gondola and wall lengths. And because the track cables can be connected anywhere along the track, it's easy to reconfigure if you move or rearrange your shelving.

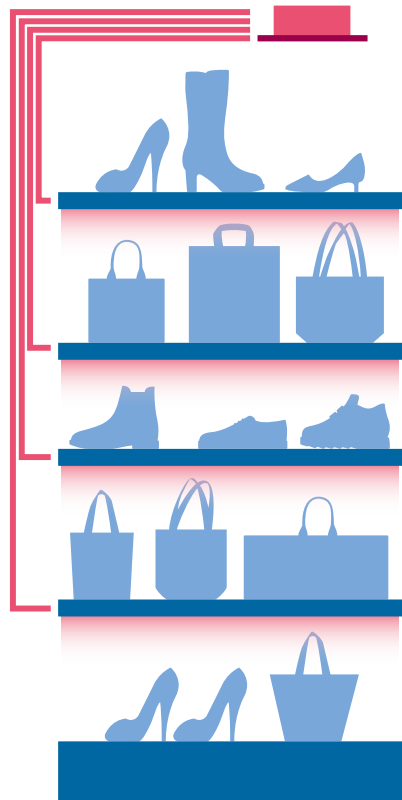
An elegant solution

RDL track system – power track, power cable and track cables with twist lock connectors are all gray to integrate seamlessly with most wall/ gondola backgrounds and walls. We offer a magnetic track cable option, which prevents any cabling from dangling over your display. The track cables are available in transparent color, so you can create a perfect match with the background behind your shelving.

Plug and Play drivers

Combining the RDL track system with Philips constant voltage Plug & Play drivers provides an entirely Plug & Play system which makes it simple for anyone to install and connect. Please refer to the table below for the full list of Plug & Play drivers.

**Current system
without RDL track**



**New system
with RDL track**

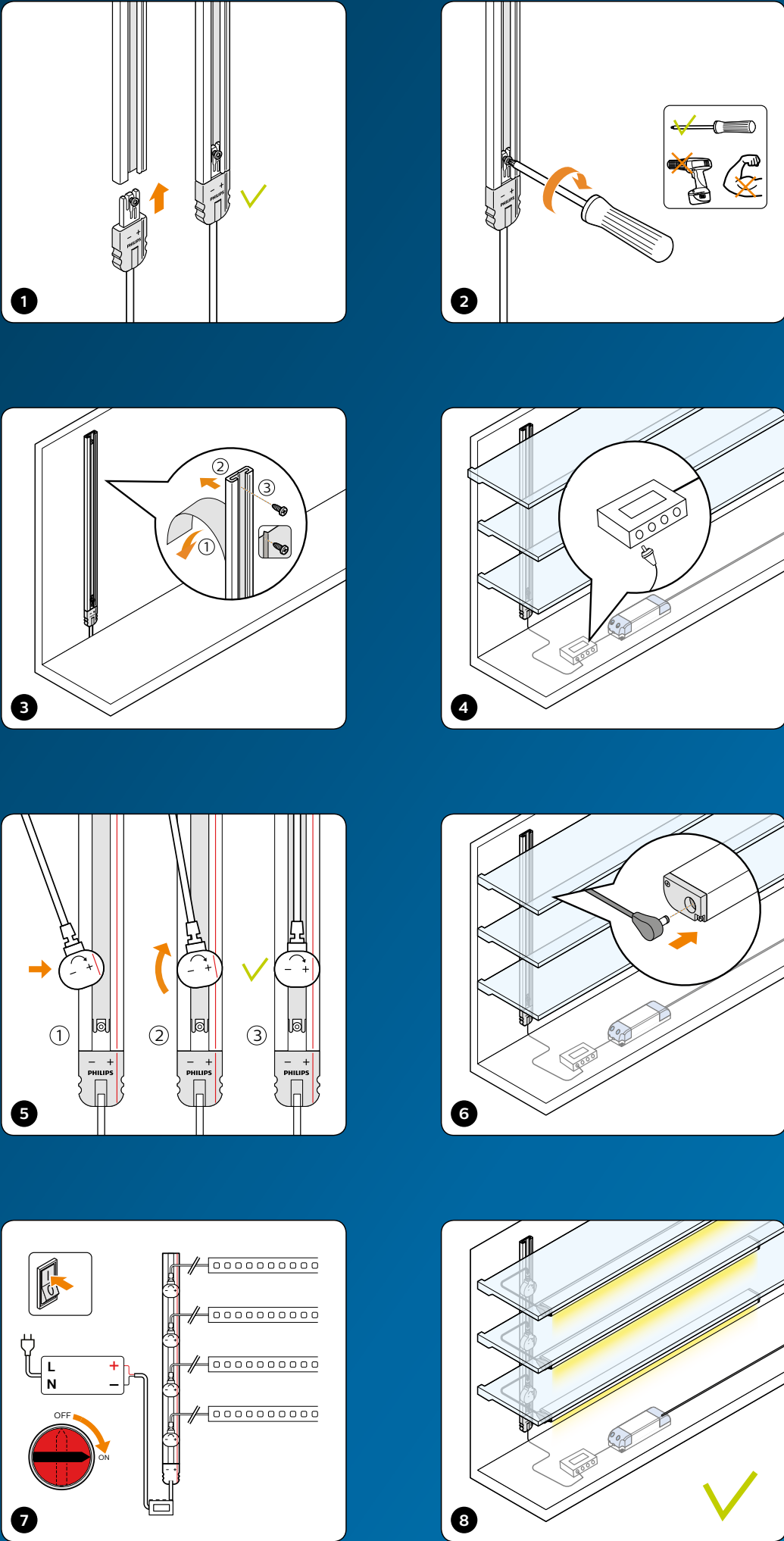
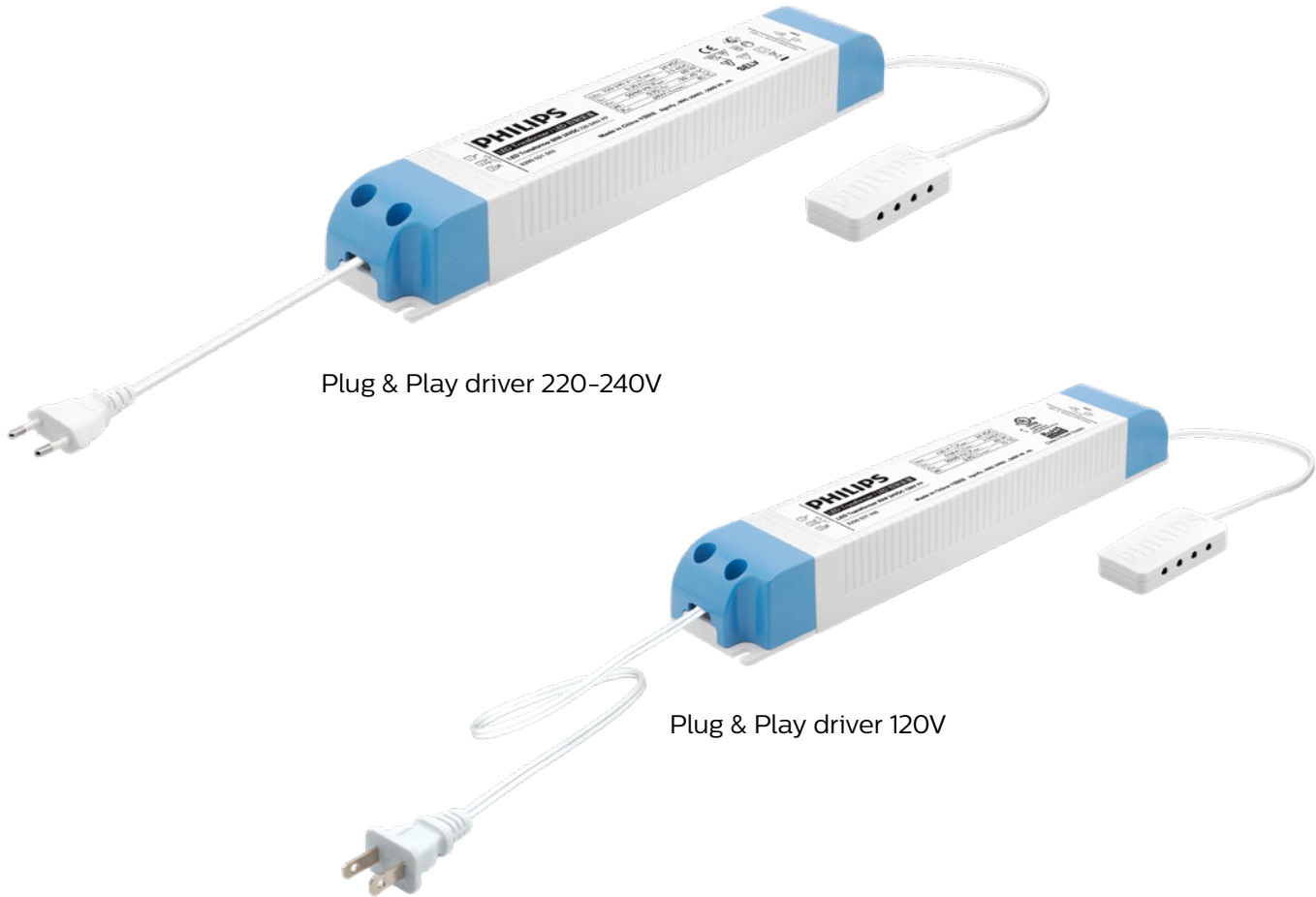


Product features

- Choice of three power track lengths: 1800mm, 1200mm, 600mm, which can be cut to size.
- Ultra slim profile: depth 6mm, width 20mm.
- Track cables with twist lock connectors can be connected anywhere along the length of the power track.
- One-way locking system for right first time right connection.
- Adhesive 3M double-sided foam tape backing adheres to a wide range of substrates including metals, glass, many plastics and most powder-coated paints.
- Screw available for a secure mechanical fix.
- Gray color track and cables integrates seamlessly with most wall / gondola backgrounds.
- Magnetic cables to prevent dangling.
- Transparent cables blend into any background.
- First UL listed track in the market.

Easiest installation with Plug & Play system

RDL track and our Philips Constant Voltage Plug and Play drivers enable plug & play simplicity, allowing for easy installation. Make connections between driver and module in just a few easy cable clicks.



Philips RDL track system

RDL track system	Product Code
	(12NC)
RDL track	
RDL track 1800mm gr	929002113606
RDL track 1200mm gr	929002113706
RDL track 600mm gr	929002113806
Power cables – to connect the RDL track to the driver	
InteGrade track powercable 1.5m gr	929002113906
InteGrade track powercable 1.5m gr angle	929002114006
Track cables – to connect the engines to the RDL track	
InteGrade track cable M 0.7m gr angle	929002114106
InteGrade track cable 0.7m gr angle	929002114206
InteGrade track cable 0.3m transp angle	929002114306
InteGrade track cable 0.4m transp angle	929002114406
InteGrade track cable 0.5m transp angle	929002114506

*gr = Grey, M = Magnetic, transp = Transparent

Constant voltage drivers	Product Code
	(12NC)
Plug and play Philips constant voltage driver list	
LED transformer 60W 24VDC 120V PP	929002106080
LED transformer 60W 24VDC 220–240V PP	929002106280
LED transformer 100W 24VDC 120V PP	929002106180
LED transformer 100W 24VDC 220–240V PP	929002106380
LED transformer 150W 24VDC 220–240V PP	929002106480
Non-plug and play Philips constant voltage drivers	
LED power driver 20W 24VDC 100–240V	929000654006
LED power driver 80W 24VDC 120–240V	929001669406
LED power driver 100W 24VDC 120–240V	929001669506
LED power driver 150W 24VDC 120–240V	929002101980
LED power driver 240W 24VDC 120–240V	929002102080
LED transformer 20W 24VDC 120–277V	929002105580
LED transformer 40W 24VDC 120–277V	929002105680
LED transformer 60W 24VDC 120–277V	929002105780
LED transformer 60W 24VDC 220–240V	913710032267
LED transformer 100W 24VDC 120–277V	929002105880
LED transformer 120W 24VDC 220–240V	913710032567
LED transformer 150W 24VDC 220–240V	929002105980
LED transformer 150W IP67 24VDC 220–240V	929001485580
LED transformer 300W IP67 24VDC 220–240V	929001485680
CertaDrive 35W 24VDC 220–240V	929001424006
CertaDrive 60W 24VDC 220–240V	929001424106
CertaDrive 100W 24VDC 220–240V	929001424206
CertaDrive 120W 24VDC 220–240V	929001424306
Xitanium 77W 100–277V 3.2A XI077C320V024FNS1M *	929001708113
Xitanium 100W 100–277V 4.1A XI100C410V024FNS1M*	929000771913
LED driver outdoor 100W 100–240V 24V**	929000485303

* Only for NAM region
** Only for Japan





©2019 Signify Holding. All rights reserved. The information provided herein is subject to change, without notice. Signify does not give any representation or warranty as to the accuracy or completeness of the information included herein and shall not be liable for any action in reliance thereon. The information presented in this document is not intended as any commercial offer and does not form part of any quotation or contract, unless otherwise agreed by Signify.

Philips and the Philips Shield Emblem are registered trademarks of Koninklijke Philips N.V. All other trademarks are owned by Signify Holding or their respective owners.

www.philips.com/technology