



使用本产品前，请仔细阅读本手册。
所有由于不恰当的使用或自行更改产品结构而导致的损坏，
生产厂商不负任何责任。

Please read this manual carefully before using the product.
The manufacturer will not held responsibility for improper
usage or modifications of the project.

使用操作说明/Operation instruction

安装维护时，请做好静电防护措施。
Please take anti-static measure during installation and maintenance.
如发现异常或操作有任何问题，请务必先切断电源，然后与飞利浦经销商联系。
In case of operation failure, please switch off the power and contact your local Philips sales organization.

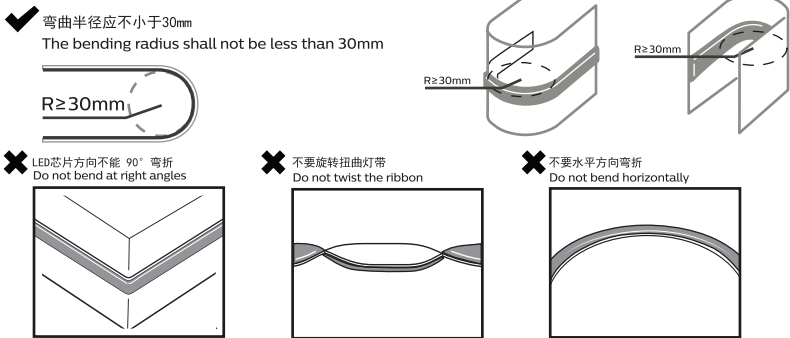
保养方法/Maintenance

为了保持灯带的明亮效果，请定期（半年一次）进行清洁。灯带不洁处需擦拭时，请使用柔软干燥的布料擦拭。
In order to ensure optimum performance, please clean the product regularly (recommended twice a year). When cleaning the
product, please use soft dry cotton cloth only.
请不要使用香薰水等挥发性物质擦拭灯带表面，请不要对灯具喷洒任何化学药剂，否则灯带可能会变色或损坏。
Do not use chemical solvents to clean the LEDFlex module, it might damage the product.

注意/Attention

安装和维护灯带时必须先切断电源。
Please shut off the power supply during the process of mounting and maintaining LEDFlex system.
灯带应由有资格的电工安装，接线要符合IEE电气标准或国家标准。
LEDFlex module should be installed by a qualified electrician and wired in accordance with the latest IEEE electrical regulations or
the national requirements.
灯带不允许被隔热或类似材料覆盖。
The LEDFlex module should not be covered by thermal insulation or similar material under any circumstance.

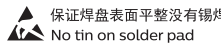
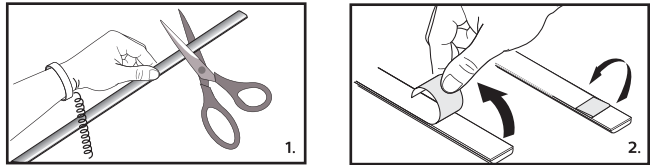
灯带安装注意/Notice



Philips Fortimo LEDFlex S

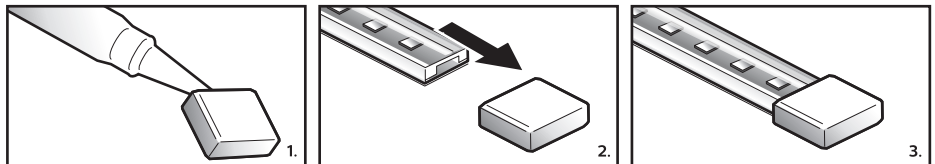
端盖及连接器安装/End cap and connector installation

1. 沿着剪线整齐剪切灯带
Cut LEDFlex module neatly along shear line
2. 去除离型纸及背胶
Remove release paper and tape



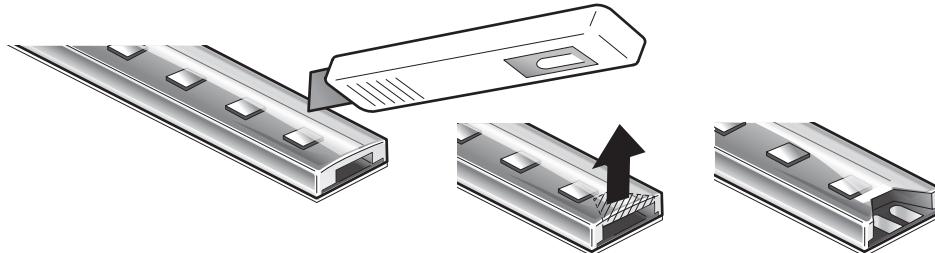
端盖安装/End cap installation

1. 将硅胶均匀挤入端盖中，使硅胶填充至端盖二分之一处
Squeeze the silica gel evenly into the end cover and fill the silica gel to half of the end cover
2. 将灯带插入端盖
Insert LEDFlex module into end cap
3. 静置灯带（至少一小时），待硅胶表面固化方可移动灯带
Let the LEDFlex to stand (at least one hour) until the silica gel surface solidifies before moving



连接器安装/Connector installation

1. 除多余的硅胶套管，露出完整焊盘
Remove the excess silicone sleeve to expose the entire pad



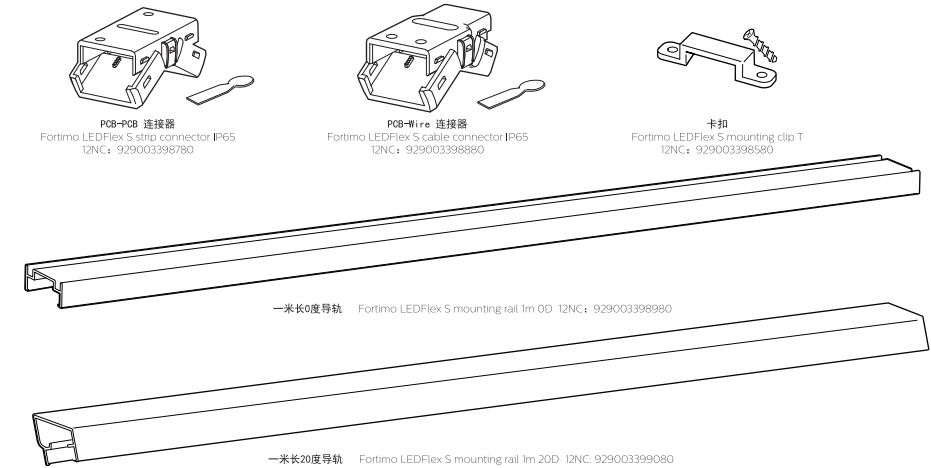
Philips Fortimo LEDFlex S

所需配件/Accessories

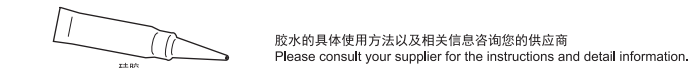
包装内附送 Come with the package



需向经销商购买 Delivered by Philips

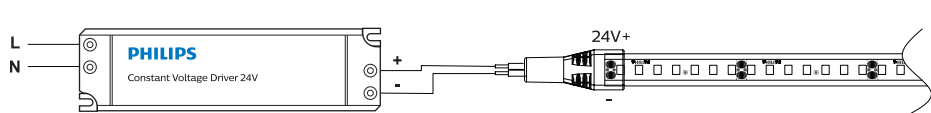


需自行采购 Organized by you



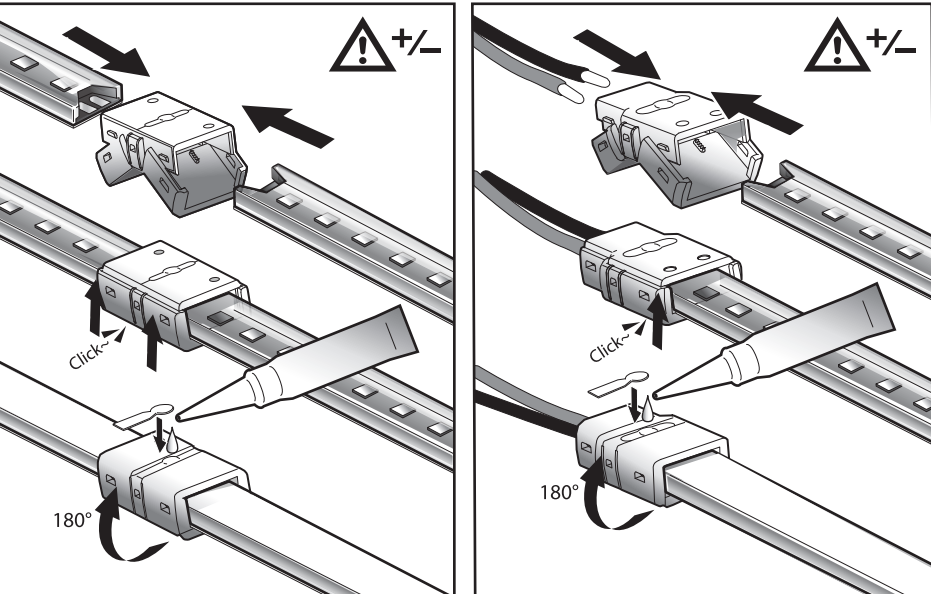
电源/Power Supply

兼容驱动列表请参考设计指南
Compatible driver list please refer to Design-in Guide



Philips Fortimo LEDFlex S

2. A- 使用PCB-PCB 连接器
Connect by PCB-PCB connector
将所需相连的两段灯带分别插入连接器两端
Insert the LEDFlex which to be connected into both ends of the connector
B- 使用PCB-Wire连接器
By PCB-Wire connectora
将两根导线插入连接器窄端，灯带插入连接器另一端
Insert the two wires into the narrow end of the connector and the LEDFlex into the other end of the connector
at each meter of LEDFlex to strengthen the fixation
* 确保正负极连接正确
Make sure the positive and negative terminals are properly connected
3. 借助钳子关闭连接器翻盖，并通电确认连接无异常
Close the connector clamshell with the help of pliers, and power on to confirm that the connection is normal
4. 将硅胶注入连接器注胶孔直到胶水填满连接器且少量溢出连接器边缘
Pour silica gel into connector injection hole until the glue fills connector and a small amount spills over connector edgema
5. 在注胶孔上安装盖帽
Add cap on connector injection hole
6. 静置灯带（至少一小时），待硅胶表面固化方可移动灯带
Let the LEDFlex to stand (at least one hour) until the silica gel surface solidifies before moving



使用PCB-PCB连接器
Connect by PCB-PCB connector

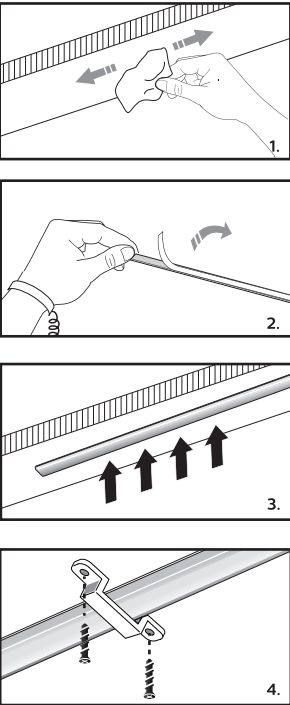
端盖和连接器是一次性产品，不可反复使用
End cap and connectors are not reusable

使用PCB-Wire连接器
Connect by PCB-Wire connector

Philips Fortimo LEDFlex S

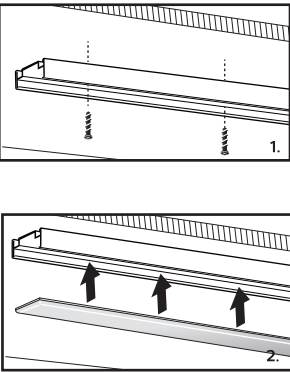
利用背胶黏贴安装/Install via tape

1. 清理安装墙体表面
Clean up the surface of holding wall
2. 去除离型纸
Remove release paper
3. 粘贴灯带
Stick LEDFlex
4. 安装卡扣，建议每隔一米安装
Install Clips. It is recommended to install them every one meter



导轨安装 /Install via rail

1. 将导轨固定在安装面上
Fix the rail on the mounting surface via screws
2. 将灯带卡入导轨（无需去除灯带背后的离型纸）
Clamp the LEDFlex into rail (No need to remove the release paper)



© 2021 Signify Holding
© Signify
Signify reserves the right to make changes in specifications
and/or to discontinue any product at any time without notice
or obligation and will not be liable for any consequences
resulting from the use of this publication.
05/2021 www.philips.com/lighting
Philips and the Philips shield emblem are registered trademarks
of Koninklijke Philips N.V.

更多的技术信息，请参考Design-in Guide，文件可从此处下载：
https://www.lighting.philips.com.sg/content/dam/lighting_philips/usa/support/technical-downloads.html
Please refer to Design-in Guide for more detail information. The documents can be found here:
https://www.lighting.philips.com.sg/content/dam/lighting_philips/usa/support/technical-downloads.html