



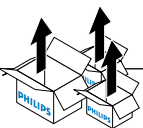
PHILIPS

RDL track

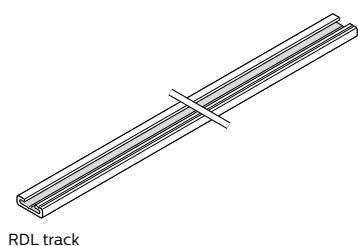


Quick Installation Guide

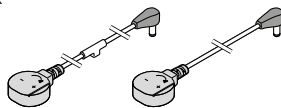
The plug and play RDL track for fashion and food cabinets



What's in the box

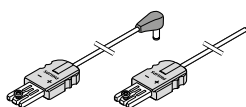


RDL track



InteGrade
track cable M

InteGrade
track cable

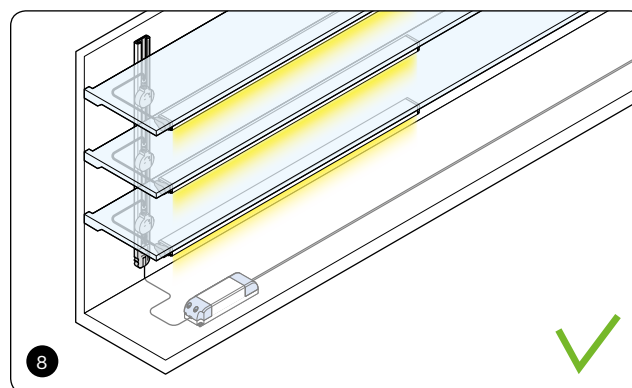
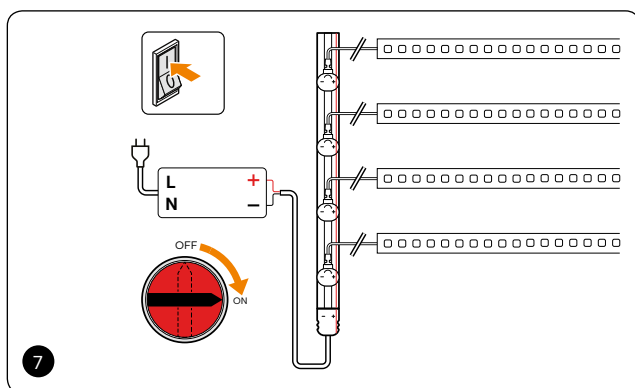
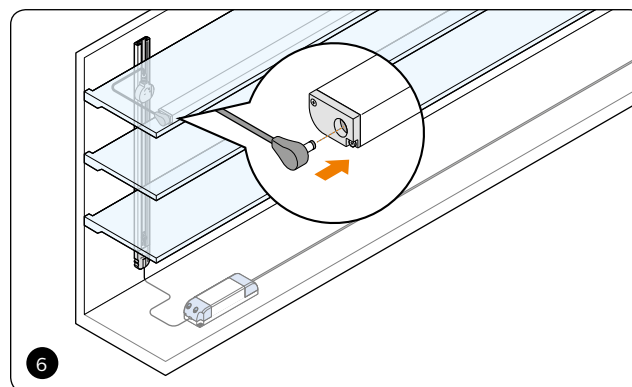
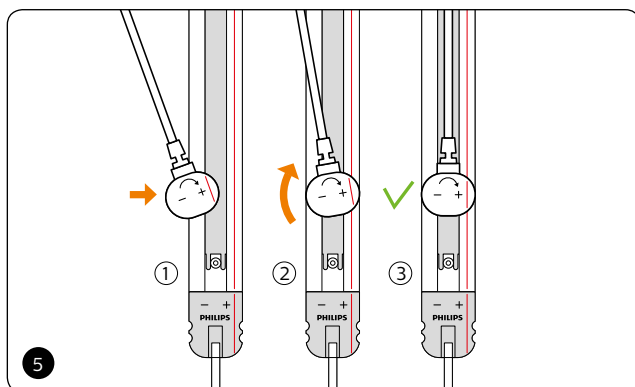
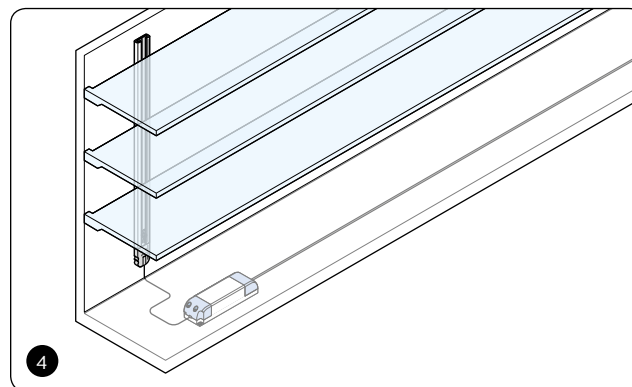
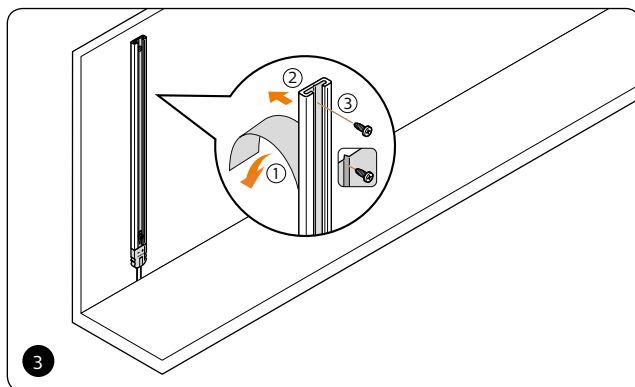
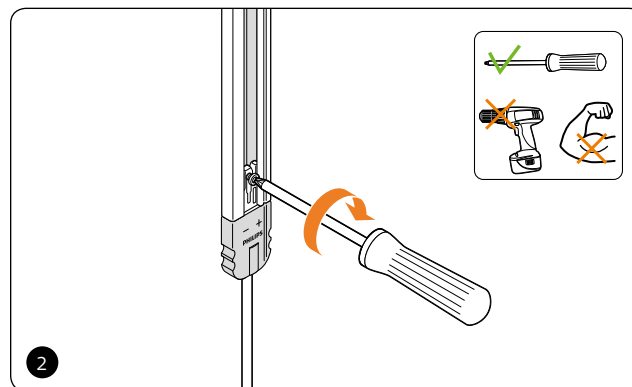
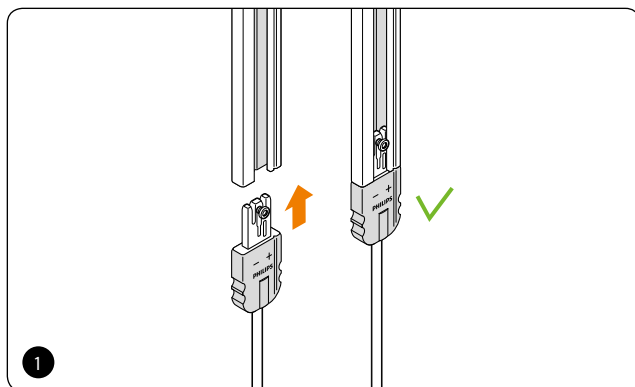


InteGrade
track power cables

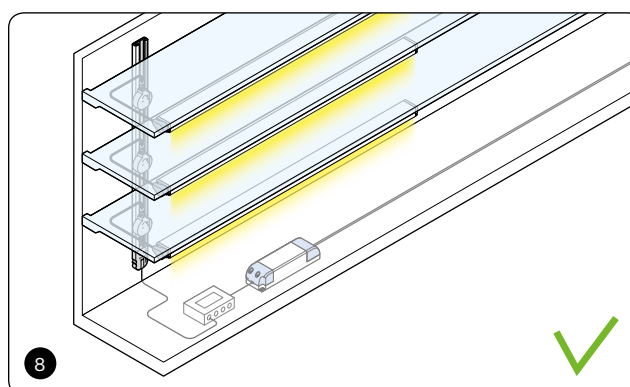
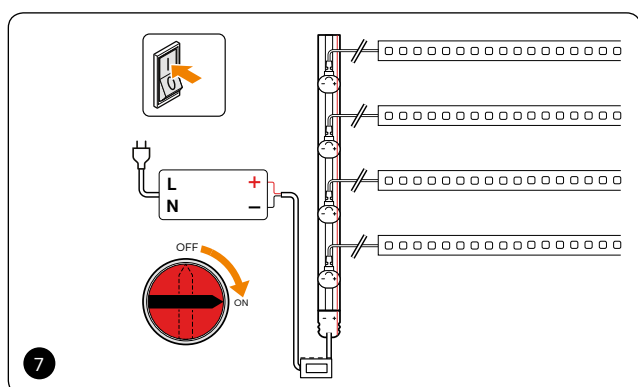
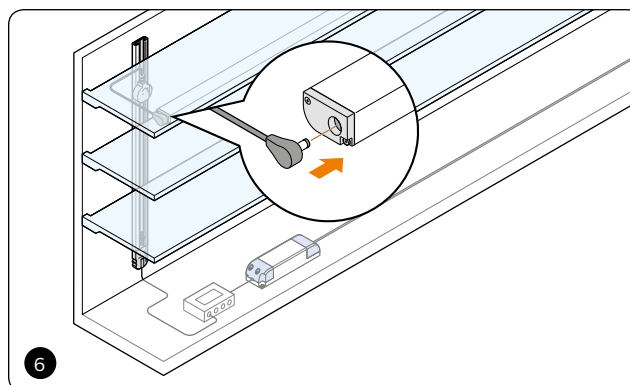
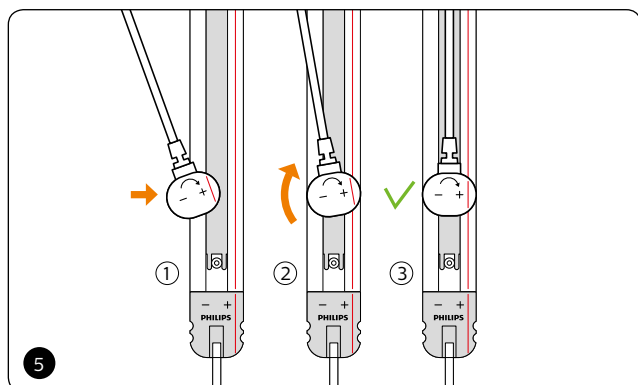
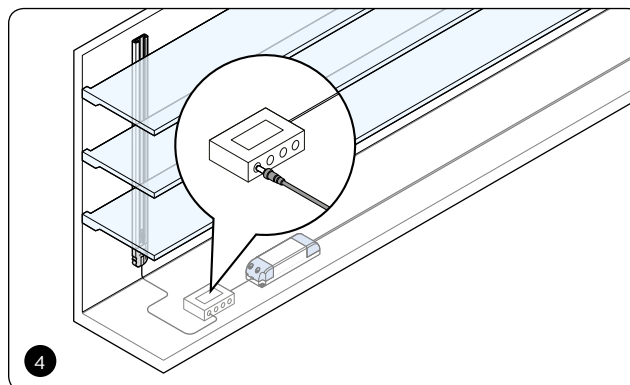
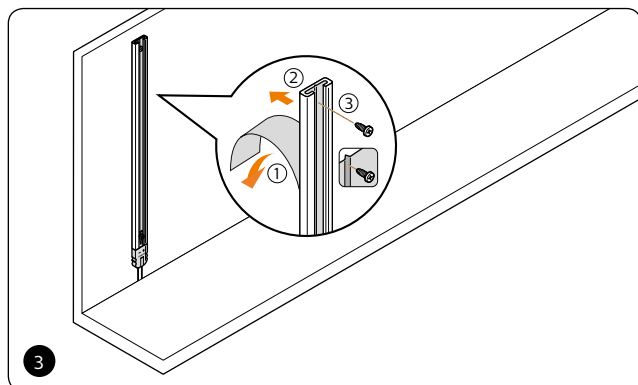
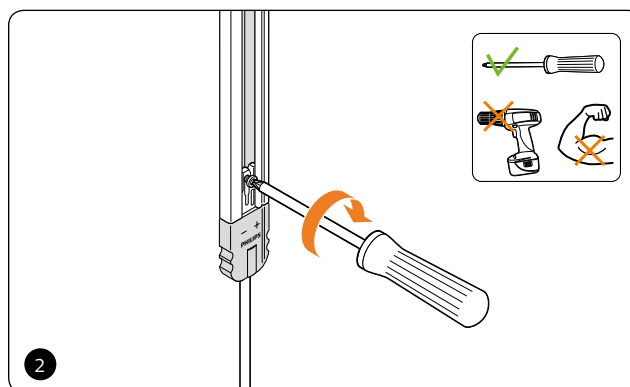
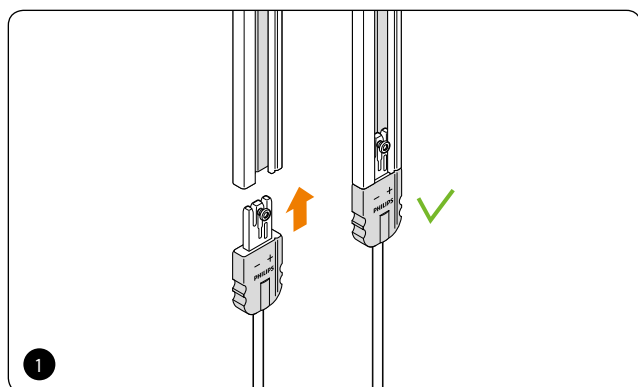
Warnings

- The installation guide does not supersede local and (inter)national regulations for electrical installations.
- Do NOT connect the minitrack to mains voltage!
- The Philips RDL track system is designed to be connected to a circuit from a separately approved LED Control gear; class 2, limited to 24Vdc, SELV, overload and short-circuit proof.
- To allow for variance in the installation, it is not recommended to load the power driver beyond 90% of it's rated maximum power.
- If the external flexible cable of cord of this track is damaged, it shall be exclusively replaced by the manufacturer or his service agent or similar qualified person in order to avoid a hazard.
- Do not place the track system in stairways and horizontal paths.
- Do not exceed a maximum ambient temperature of 45 degree Celcius.
- Keep a minimal distance between the Led module and the track of 5 cm.
- It is the user's responsibility to ensure electrical, mechanical and thermal compatibility between the track system and modules attached to it.
- Class III luminaire track systems/sectors openings and components are not compatible with class I track system. Class III luminaire connectors/adaptors should not be used on other manufacturer's track systems.
- **CAUTION: TO REDUCE THE RISK OF OVERHEATING AND FIRE DO NOT BRIDGE CONDUCTORS.**
- Electrically connect luminaires to the RDL track via InteGrade track only cables.
- Do not mechanically connect luminaires to the RDL track system.
- Terminal block is not included. Installation may require advice from a qualified person.
- Use only vertical with screw in the top side.
- If you require further support, please contact your local Philips sales organization.

Installation instruction without the splitter box



Installation instruction with the splitter box



© 2019 Signify Holding. All rights reserved. The information provided herein is subject to change, without notice. Signify does not give any representation or warranty as to the accuracy or completeness of the information included herein and shall not be liable for any action in reliance thereon. The information presented in this document is not intended as any commercial offer and does not form part of any quotation or contract, unless otherwise agreed by Signify.

Philips and the Philips Shield Emblem are registered trademarks of Koninklijke Philips N.V. All other trademarks are owned by Signify Holding or their respective owners.

Document order number: 4422 107 08302
09/2019 | Data subject to change

www.philips.com/oem
www.philips.com/ledmodulesna

NA Customer Support/Technical Service:
Tel. (1)800-372-3331