

CERTIFICATE

Issued to:
Applicant:
Philips Lighting B.V.
High Tech Campus 45
5656 AE Eindhoven
The Netherlands

Manufacturer/Licensee:
Philips Lighting B.V.
High Tech Campus 45
5656 AE Eindhoven
The Netherlands

Product : Electronic driver for LED modules
Trade name : PHILIPS
Type : Xitanium 150W 0.2-0.7A 300V iXt TD 230V

The product and any acceptable variation thereto is specified in the Annex to this certificate and the documents therein referred to.

DEKRA hereby declares that the above-mentioned product has been certified on the basis of:

- a type test according to the standard EN 61347-1:2008 + A1:2011 + A2:2013; EN 61347-2-13:2014; EN 62384:2006 + A1:2009
- an inspection of the production location according to CENELEC Operational Document CIG 021
- a certification agreement with the number 2037471

DEKRA hereby grants the right to use the ENEC KEMA-KEUR certification mark.

The ENEC KEMA-KEUR certification mark may be applied to the product as specified in this certificate for the duration of the ENEC KEMA-KEUR certification agreement and under the conditions of the ENEC KEMA-KEUR certification agreement.

This certificate is issued on: 14 June 2016 and expires upon withdrawal of one of the above mentioned standards.

Certificate number: 2194681.02

DEKRA Certification B.V.



drs. G.J. Zoetbrood
Managing Director



Herman de Vries
Certification Manager

© Integral publication of this certificate is allowed

ACCREDITED BY THE
DUTCH ACCREDITATION
COUNCIL



SPECIFICATION OF THE CERTIFIED PRODUCT**Product data**

product	: Electronic driver for LED modules
trade name	: PHILIPS
type	: Xitanium 150W 0.2-0.7A 300V iXt TD 230V
rated current	: 0.72 A
rated voltage	: 220...240 Vac
rated power	: 159 W
nature of supply	: ac/dc
rated frequency	: 50/60 Hz, DC
ambient temperature range (ta)	: -40...+60 °C
max.case temperature (tc)	: 90 °C
V-out max	: 330 V
I-out	: 0.2...0.7 A
P-out	: 150 W
power factor	: 0.9C
V-out	: 100-300 V

Additional information

The isolation between primary / secondary and DALI is Basic isolation.

TESTS**Test requirements**

EN 61347-1:2008 + A1:2011 + A2:2013

EN 61347-2-13:2014

EN 62384:2006 + A1:2009

Test result

The test results are laid down in DEKRA test file 2194681.00.

Conclusion


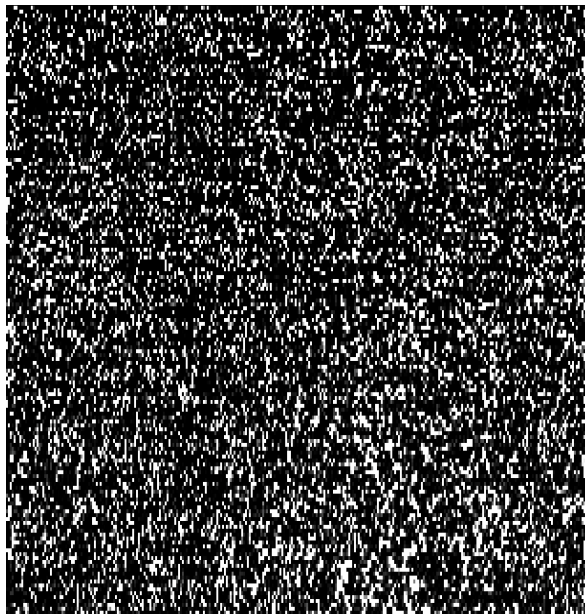
The examination proved that all test requirements were met.

The tests were performed by the manufacturer under the conditions of the agreement concerning the manufacturer's right to conduct type tests for the KEMA-KEUR / ENEC certification system under supervision of DEKRA (CTF Stage 3)

Supervised by : T.H.J.M. Michels



Checked by : H.J.H. te Lindert

**Factory locations**

List of components

