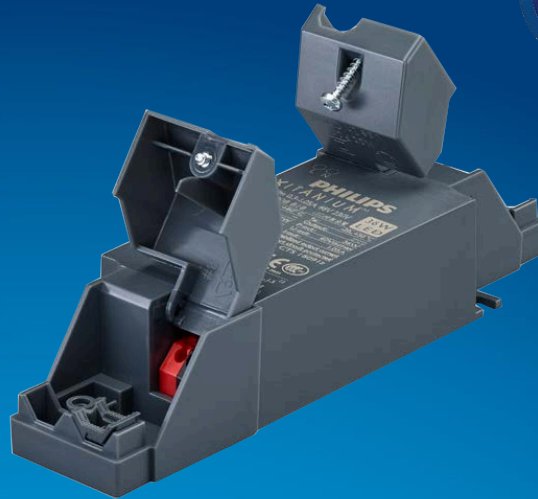


PHILIPS

Mini LED-Driver

Accessory



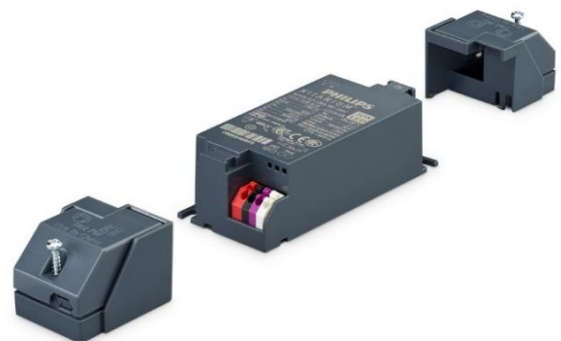
Datasheet

Strain Relief Blocks 9290 014 61680 / 9290 014 30906

Enabling Independent Use of Mini Drivers

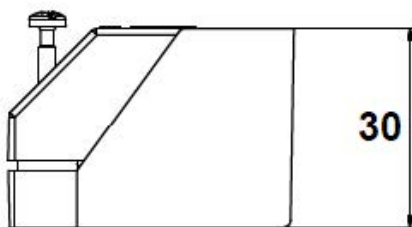
The “/m” proposition is the unique offering to address miniaturization trend in Philips point driver portfolio. The “Mini” family is being extended with new ranges and new derivatives every day to make it suitable both for different applications and also for different segment needs. This family consists of Mini Rset, Mini SimpleSet and Mini Single Current ranges.

Now these ranges can be adapted for use in independent applications by the use of a strain relief cap that can be ordered separately, as an accessory*. This will ensure that the driver is thermally protected and safe to use in ceilings**.

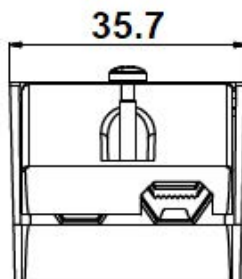
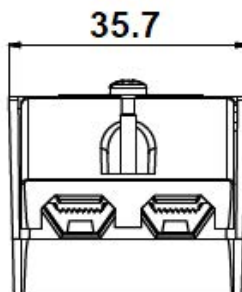


* Use of these strain relief blocks is not supported in China from regulatory perspective. Use strain relief blocks 9290 014 61880 instead for use in China.

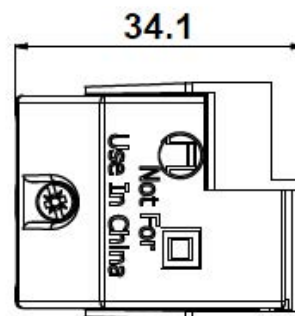
** Use of these strain relief blocks in combination with Xitanium 50W/m Rset driver is not supported.



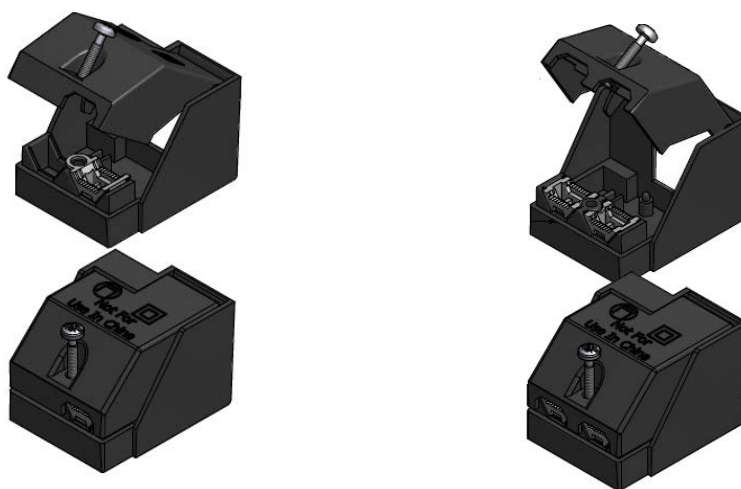
Side view



Front view (DALI & Fixed Output)



Top view



Logistical data

| Product description | Strain Relief Block for Fixed Output only | Strain Relief Block for DALI & Fixed Output |
|----------------------|---|---|
| Order code | 8718696 583197 00 | 8718696 767351 00 |
| Logistical code 12NC | 9290 014 61680 | 9290 014 30906 |
| Pieces per box | 40 | 40 |

Storage temperature and humidity (min-max)

| | |
|---------------------|----------------------------|
| Ambient temperature | -25°C .. +85°C |
| Relative humidity | 5% .. 95% (Non-condensing) |

Mechanical data (min-max)

| | |
|---------------------|--------------|
| Wire outer diameter | 3 - 8 mm |
| Screw torque | 0.8 - 1.2 Nm |



©2020 Signify Holding, IBRS 10461, 5600 VB, NL. All rights reserved.

UK importer address: Signify Commercial UK Limited, 3, Guildford Business Park, GU2 8XG.

The information provided herein is subject to change without notice. Signify does not give any representation or warranty as to the accuracy or completeness of the information included herein and shall not be liable for any action in reliance thereon. The information presented in this document is not intended as any commercial offer and does not form part of any quotation or contract, unless otherwise agreed by Signify.

Philips and the Philips Shield Emblem are registered trademarks of Koninklijke Philips N.V. All other trademarks are owned by Signify Holding or their respective owners.

Date of release: March 19, 2021 v3

Data subject to change.

www.philips.com/oem