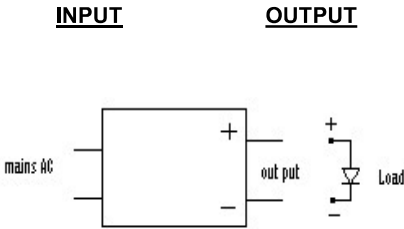




Ordering 12NC	929002889706
Brand Name	LED Driver
Description	CertaDrive LED Driver 5W 300mA 240V
Model Number	C005C030V018FNM1AI
Input Voltage	220 - 240V
Input Frequency	50 / 60 Hz
RoHS	Yes
Approbations	IS 15885 (Part 2 / Sec 13)
Status	BIS Certified

Output Power (W)	Output Voltage (V)	Output Current (A)	Efficiency at Max Load	Max Case Temp (°C)	Input Current (Arms)	Max Input Power (W)	Isolation (Input - Output)	THD @ Max Load (%)	Power Factor @Max Load	Surge Protection (KV)	Weight (Kg)	Envir. Protection Rating
5	9-18	0.300	240V	65	240V	7	Isolated Driver	≤ 160 @Max Load	≥ 0.5	2.0	0.025	IP 20
			≥70		0.065							Indoor use

Wire Diagram



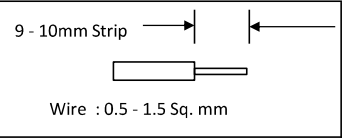
Input Connector

Mains (L-N)	Two Wire(White)
---------------	-----------------

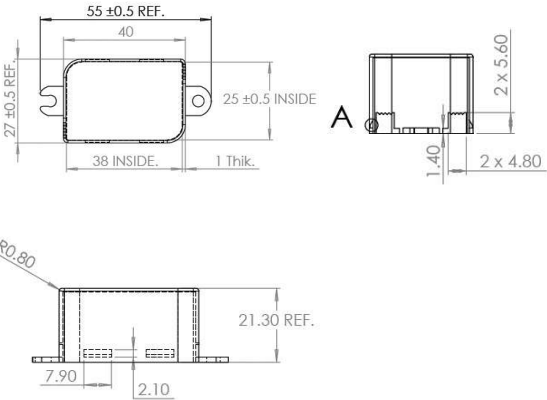
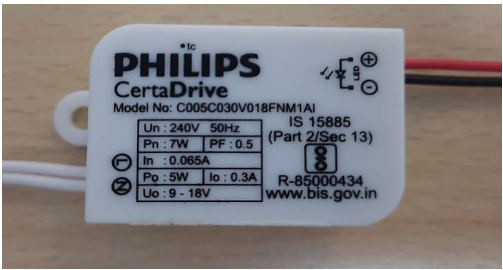
Output Connector

LED +ve	Red Wire
LED -ve	Black Wire

Wire to Use



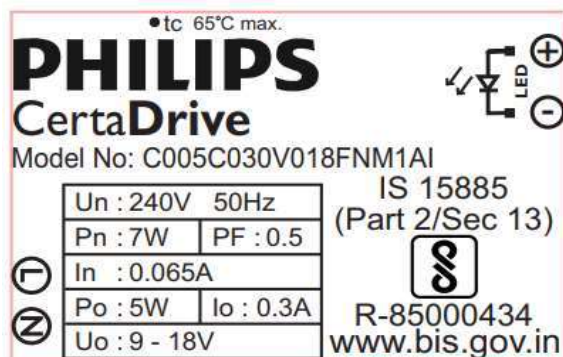
Enclosure



	(mm)
Case Length	55
Case Width	28
Case Height	21
Mounting Length	48

PHILIPS

Ordering 12NC	929002889706
Brand Name	LED Driver
Description	CertaDrive LED Driver 5W 300mA 240V
Model Number	C005C030V018FNM1AI
Input Voltage	220 - 240V
Input Frequency	50 / 60 Hz
RoHS	Yes
Approbations	IS 15885 (Part 2 / Sec 13)
Status	BIS Certified



Product Data	
Full product code	929002889706
Full product name	CertaDrive LED Driver 5W 300mA 240V
Net weight per piece	25 gms
Dimming	None (FIXED)
Ambient Temp. Range	0°C to + 40°C
Line Voltage (AC Nominal)	220 - 240V +/-10%
Line Voltage (AC Performance Range)	170 - 270V
Line Regulation	+/- 10% of I _{max}
Line Current	0.065A @ 240V
Line Frequency	50 Hz
Envir. Protection Rating	IP 20 (For Indoor use only)
Life at Tc 65 drgree C	30000 hrs (nom.)
Tc - Max.	65°C
Input Over Voltage	Can Survive input Voltage Stress of 320V for 48 hours Can Survive input Voltage Stress of 350V for 2 hours
LED Current Tolerance	+/- 10% of I _{max}
Output Ripple	≤ 30% (Pk/Mean)
THD Total	≤ 160% @ Full Load @ 240V Supply
P.F. at Max. Load	≥ 0.5
Isolation (Input - Output)	Isolated
Protection	Short Circuit and Open Circuit Protection for LED + and LED -
Standby Power	≤ 0.5W



Ordering 12NC	929002889706
Brand Name	LED Driver
Description	CertaDrive LED Driver 5W 300mA 240V
Model Number	C005C030V018FNM1AI
Input Voltage	220 - 240V
Input Frequency	50 / 60 Hz
RoHS	Yes
Approbations	IS 15885 (Part 2 / Sec 13)
Status	BIS Certified

Installation & Application Notes :

Section I - Physical Characteristics

- 1.1 LED Driver shall be installed inside an electrical enclosure
- 1.2 Wiring inside electrical enclosure shall comply with 600V/105°C rating or higher

Section II - Performance

- 2.1 LED Driver has a rated lifetime of 30,000 hours @ $T_c \leq 65^\circ\text{C}$
- 2.2 LED Driver tolerates sustained open circuit and short circuit output conditions without damage
- 2.3 LED Driver maximum allowable case temperature is 65°C - see product label for measurement location
- 2.4 LED Driver complies with the requirements of IS 15885 (Part 2 / Sec 13)

ELECTRICAL RATINGS :

Model	Input, 50/60 Hz		Output (nominal)		
	V	A	V DC	A DC	Watts
CertaDrive LED Driver 5W 300mA 240V	220 - 240	0.065	9-18	0.300	5

TECHNICAL CONSIDERATIONS (NOT FOR FIELD REPRESENTATIVES USE) :

Section III - Conditions of acceptability

When installed in the end-use equipment, the following are among the considerations to be made :

- 3.1 The equipment shall be installed in compliance with the enclosure, mounting, spacing, casualty and segregation requirements of the ultimate application.
- 3.2 The driver is suitable for indoor application only.
- 3.3 When the drivers are installed in the end-use application, the case temperature should not exceed the temperature limits specified in the following table:

Model	Input Voltage, Hz	Max Case @ TC , °C
CertaDrive LED Driver 5W 300mA 240V	220 - 240 , 50	65



©2021 Signify Holding, IBRS 10461, 5600 VB, NL. All rights reserved.

Address: Signify Innovations India Ltd
9B, DLF 9th Floor
DLF Cyber City, DLF Phase III
Gurgaon 122002
India

The information provided herein is subject to change without notice. Signify does not give any representation or warranty as to the accuracy or completeness of the information included herein and shall not be liable for any action in reliance thereon. The information presented in this document is not intended as any commercial offer and does not form part of any quotation or contract, unless otherwise agreed by Signify.

Philips and the Philips Shield Emblem are registered trademarks of Koninklijke Philips N.V. All other trademarks are owned by Signify Holding or their respective owners. Date of release: July 17, 2021